

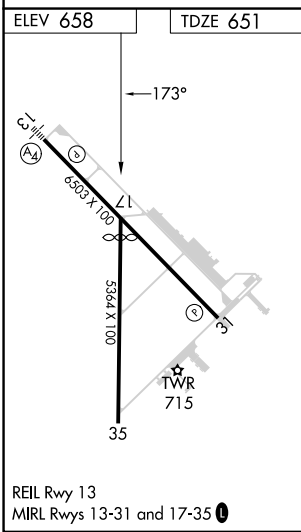
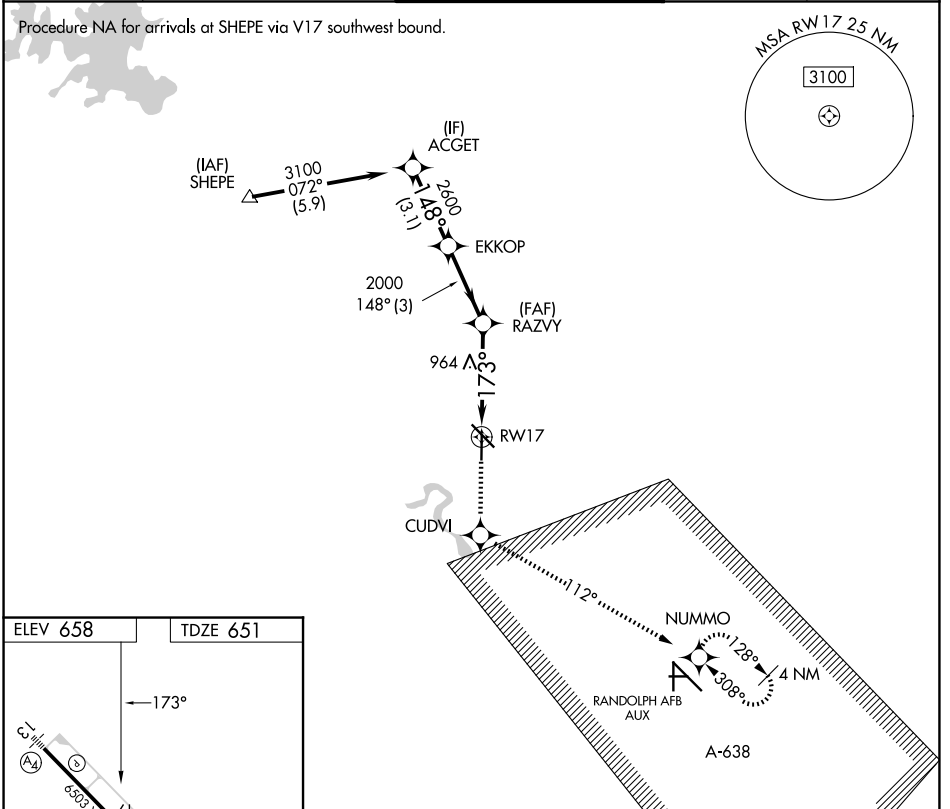
APP CRS	Rwy Ldg	4842
173°	TDZE	651
	Apt Elev	658

RNAV (GPS) RWY 17

NEW BRAUNFELS NTL (B.A.Z)

RNP APCH.	<p>When local altimeter setting not received, use San Marcos Rgnl altimeter setting and increase all MDAs 60 feet and visibility Cat C ¼ SM. VDP NA when using San Marcos Rgnl altimeter setting.</p>	<p>MISSED APPROACH: Climb to 3500 direct CUDVI and via 112° track to NUMMO and hold, continue climb-in-hold to 3500.</p>
-----------	---	--

ATIS 119.325	SAN ANTONIO APP CON 124.45 335.625	NEW BRAUNFELS TOWER ★ 127.05 (CTAF) 285.4	GND CON 120.175	UNICOM 122.7
------------------------	--	---	---------------------------	------------------------



3500	CUDVI	NUMMO	ACGET
↑	✧	✧	✧
	tr 112°		
	1.6 NM to RW17	RAZVY	EKKOP
	3.03° TCH 45	2000	2600
	173°	148°	3100
	1.6 NM	2.5 NM	3 NM
	3.1 NM		
CATEGORY	A	B	C
LNAV MDA	1220-1	569 (600-1)	1220-1½ 569 (600-1½)
			1220-1¾ 569 (600-1¾)

Procedure Turn NA

SC-3, 11 JUN 2026 to 09 JUL 2026

SC-3, 11 JUN 2026 to 09 JUL 2026