

(YODUH2.YODUH) 25219

AL-6080 (FAA)

NEW BRAUNFELS NTL (BAZ)
NEW BRAUNFELS, TEXAS

YODUH TWO DEPARTURE (RNAV)

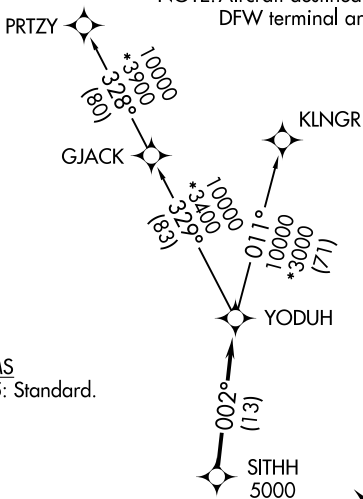
SAN ANTONIO DEP CON
128.05 290.225
ATIS
119.325
CLNC DEL
134.75
CLNC DEL (When twr closed)
134.75
GND CON
120.175
NEW BRAUNFELS TOWER *
127.05 285.4

RNAV 1 - DME/DME IRU or GPS.

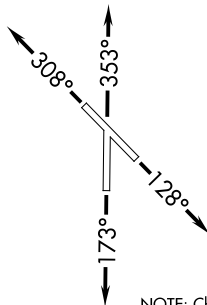
RADAR required for non-GPS equipped aircraft.
RADAR required.

**TOP ALTITUDE:
ASSIGNED BY ATC**

NOTE: Aircraft destined for airports north/northeast of
DFW terminal area must file the KLNGR Transition.



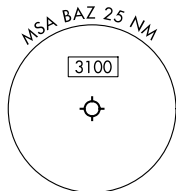
TAKEOFF MINIMUMS
Rwys 13, 17, 31, 35: Standard.



NOTE: Chart not to scale.

SC-3, 11 JUN 2026 to 09 JUL 2026

SC-3, 11 JUN 2026 to 09 JUL 2026



DEPARTURE ROUTE DESCRIPTION

TAKEOFF RUNWAY 13: Climb on heading 128° or as assigned by ATC, for vectors to SITHH, thence. . .

TAKEOFF RUNWAY 17: Climb on heading 173° or as assigned by ATC, for vectors to SITHH, thence. . .

TAKEOFF RUNWAY 31: Climb on heading 308° or as assigned by ATC, for vectors to SITHH, thence. . .

TAKEOFF RUNWAY 35: Climb on heading 353° or as assigned by ATC, for vectors to SITHH, thence. . .

. . .on track 002° to YODUH, then on transition. Maintain ATC assigned altitude. Expect filed altitude 10 minutes after departure.

KLNGR TRANSITION (YODUH2.KLNGR)
PRTZY TRANSITION (YODUH2.PRTZY)

YODUH TWO DEPARTURE (RNAV)
(YODUH2.YODUH) 07AUG25

NEW BRAUNFELS, TEXAS
NEW BRAUNFELS NTL (BAZ)