

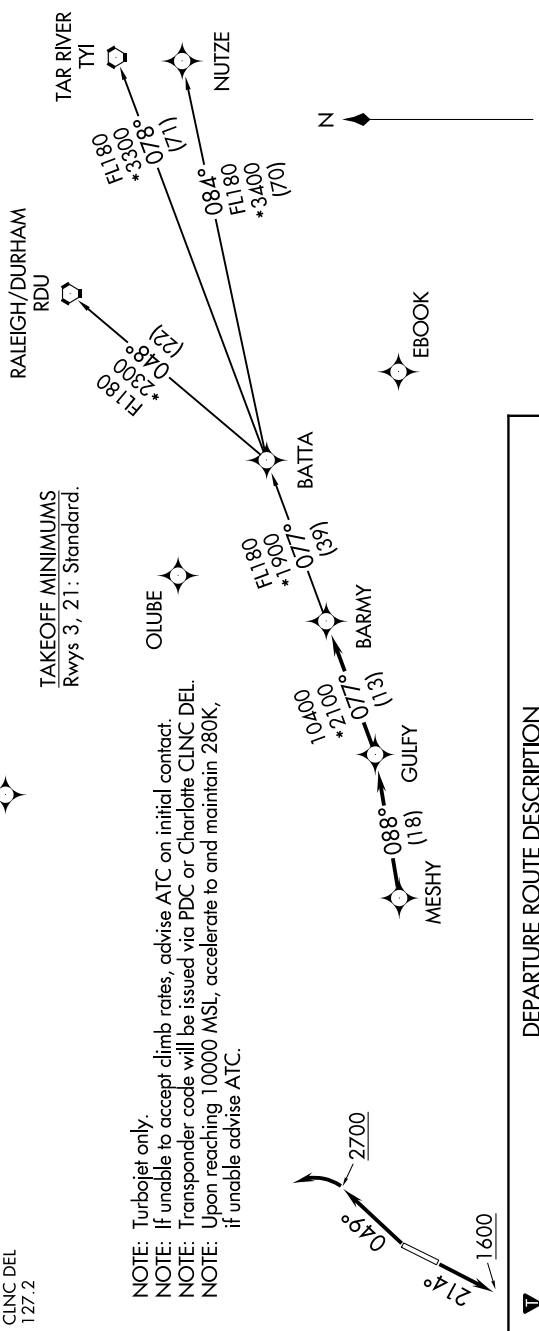
BARMY SIX DEPARTURE (RNAV)

SE-2, 11 JUN 2026 to 09 JUL 2026

TOP ALTITUDE:
3000

RNAV 1 - DME/DME/IRU or GPS.
RADAR required.

CHARLOTTE DEP CON
120.05 257.2
ASOS
135.725
CLNC DEL
127.2



TAKEOFF MINIMUMS
Rwys 3, 21: Standard.

- NOTE: Turbojet only.
- NOTE: If unable to accept climb rates, advise ATC on initial contact.
- NOTE: Transponder code will be issued via PDC or Charlotte CLNC DEL.
- NOTE: Upon reaching 10000 MSL, accelerate to and maintain 280K; if unable advise ATC.

DEPARTURE ROUTE DESCRIPTION

TAKEOFF RUNWAY 3: Climb on heading 049° to 2700 before turning left, then on heading assigned by ATC, thence. . . .

TAKEOFF RUNWAY 21: Climb on heading 214° to 1600 before proceeding north, then on heading assigned by ATC, thence. . . .

. . . on RADAR vectors to MESHY, then on depicted route to BARMY. Then on assigned transition. Maintain 3000, expect filed altitude 10 minutes after departure.

- NUTIZE TRANSITION (BARMY6.NUTIZE)
- RALEIGH/DURHAM TRANSITION (BARMY6.RDU)
- TAR RIVER TRANSITION (BARMY6.TYI)

SE-2, 11 JUN 2026 to 09 JUL 2026

NOTE: Chart not to scale.