

(BEAVY7.BEAVY) 26134

AL-6081 (FAA)

GASTONIA MUNI (AKH)  
GASTONIA, NORTH CAROLINA

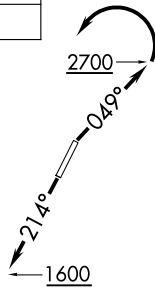
# BEAVY SEVEN DEPARTURE (RNAV)

CHARLOTTE DEP CON  
120.05 257.2  
ASOS  
135.725  
CLNC DEL  
127.2

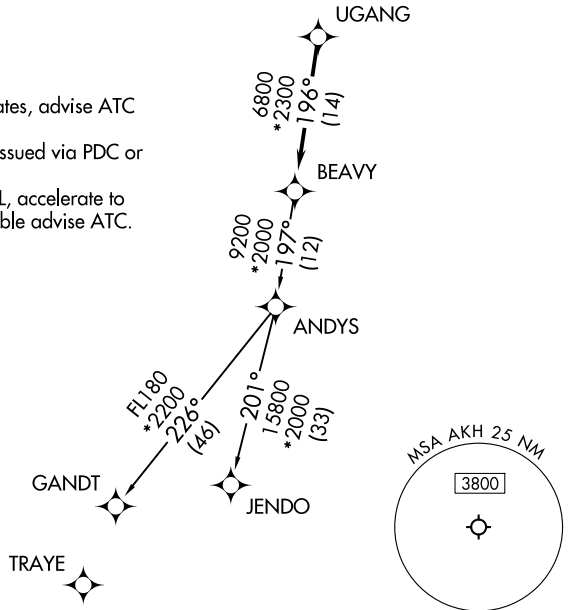
RNAV 1 - DME/DME/IRU or GPS.  
RADAR required.

**TOP ALTITUDE:  
3000**

**TAKEOFF MINIMUMS**  
Rwys 3, 21: Standard.



- NOTE: Turbojet only.
- NOTE: If unable to accept climb rates, advise ATC on initial contact.
- NOTE: Transponder code will be issued via PDC or Charlotte CLNC DEL.
- NOTE: Upon reaching 10000 MSL, accelerate to and maintain 280K, if unable advise ATC.



NOTE: Chart not to scale.



## DEPARTURE ROUTE DESCRIPTION

TAKEOFF RUNWAY 3: Climb on heading 049° to 2700 before turning left, then on heading assigned by ATC, thence. . .

TAKEOFF RUNWAY 21: Climb on heading 214° to 1600 before proceeding north, then on heading assigned by ATC, thence. . .

. . . on RADAR vectors to UGANG, then on track 196° to BEAVY. Then on assigned transition. Maintain 3000, expect filed altitude 10 minutes after departure.

GANDT TRANSITION (BEAVY7.GANDT)

JENDO TRANSITION (BEAVY7.JENDO)

# BEAVY SEVEN DEPARTURE (RNAV)

(BEAVY7.BEAVY) 14MAY26

GASTONIA, NORTH CAROLINA  
GASTONIA MUNI (AKH)

SE-2, 11 JUN 2026 to 09 JUL 2026