

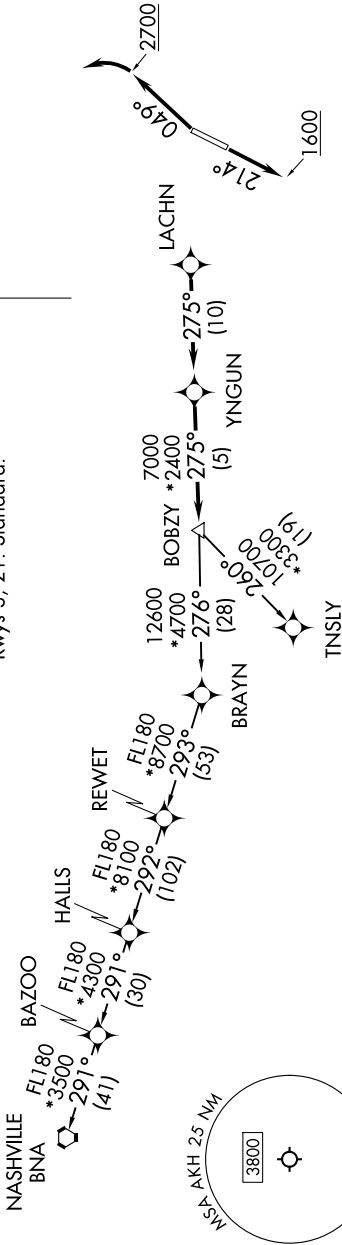
BOBZY SIX DEPARTURE (RNAV)

2020 JUN 11 09 20:26

CHARLOTTE DEP CON
120.05 257.2
ASOS
135.725
CLNC DEL
127.2

RNAV 1 - DME/DME/IRU or GPS.
RADAR required.

TAKEOFF MINIMUMS
Rwys 3, 21: Standard.



TOP ALTITUDE:
3000

DEPARTURE ROUTE DESCRIPTION

TAKEOFF RUNWAY 3: Climb on heading 049° to 2700 before turning left, then on heading assigned by ATC, thence...

TAKEOFF RUNWAY 21: Climb on heading 214° to 1600 before proceeding north, then on heading assigned by ATC, thence...

...on RADAR vectors to LACHN, then on depicted route to BOBZY, then on assigned transition. Maintain 3000, expect filed altitude 10 minutes after departure.

NASHVILLE TRANSITION (BOBZY6.BNA)
TNSLY TRANSITION (BOBZY6.TNSLY)

- NOTE: Turbojet only.
- NOTE: If unable to accept climb rates, advise ATC on initial contact.
- NOTE: Transponder code will be issued via PDC or Charlotte CLNC DEL.
- NOTE: Upon reaching 10000 MSL, accelerate to and maintain 280K, if unable advise ATC.

NOTE: Chart not to scale.

BOBZY SIX DEPARTURE (RNAV)

SE-2, 11 JUN 2026 to 09 JUL 2026