

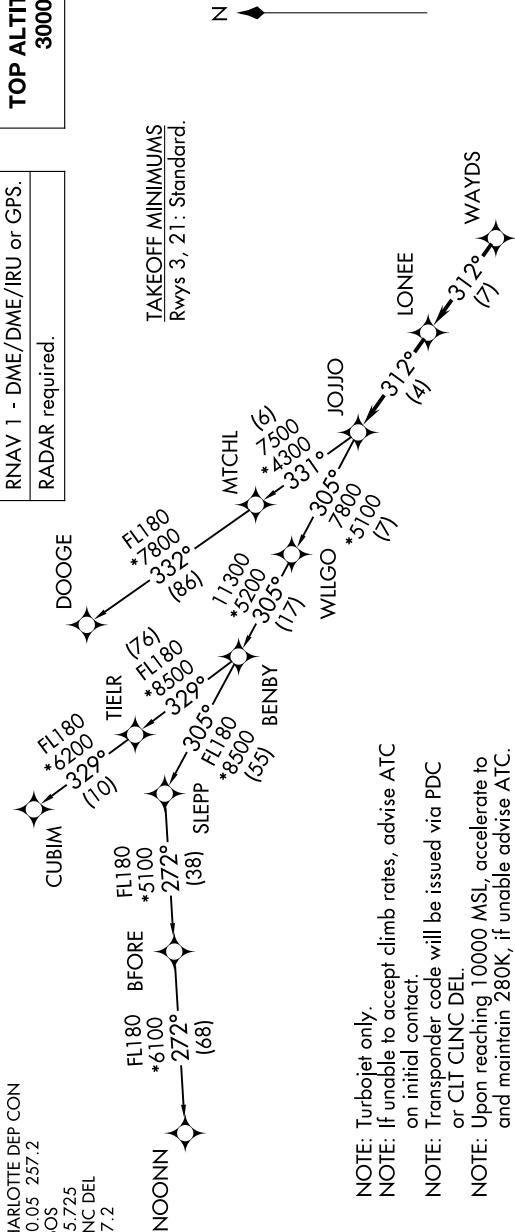
JOJO SIX DEPARTURE (RNAV)

SE-2, 11 JUN 2026 to 09 JUL 2026

TOP ALTITUDE:
3000

RNAV 1 - DME/DME/IRU or GPS.
RADAR required.

TAKEOFF MINIMUMS
Rwys 3, 21: Standard.



- NOTE: Turbojet only.
- NOTE: If unable to accept climb rates, advise ATC on initial contact.
- NOTE: Transponder code will be issued via PDC or CLT CLNC DEL.
- NOTE: Upon reaching 10000 MSL, accelerate to and maintain 280K, if unable advise ATC.

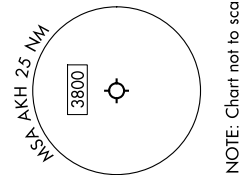
DEPARTURE ROUTE DESCRIPTION

TAKEOFF RUNWAY 3: Climb on heading 049° to 2700 before turning left, then on heading assigned by ATC, thence. . . .

TAKEOFF RUNWAY 21: Climb on heading 214° to 1600 before proceeding north, then on heading assigned by ATC, thence. . . .

. . . for RADAR vectors to WAYDS, then on depicted route to JOJO. Then on assigned transition. Maintain 3000, expect filed altitude 10 minutes after departure.

- CUBIM TRANSITION (JOJO6.CUBIM)
- DOOGE TRANSITION (JOJO6.DOOGE)
- NOONIN TRANSITION (JOJO6.NOONIN)



NOTE: Chart not to scale.

SE-2, 11 JUN 2026 to 09 JUL 2026