

# KILNS SIX DEPARTURE (RNAV)

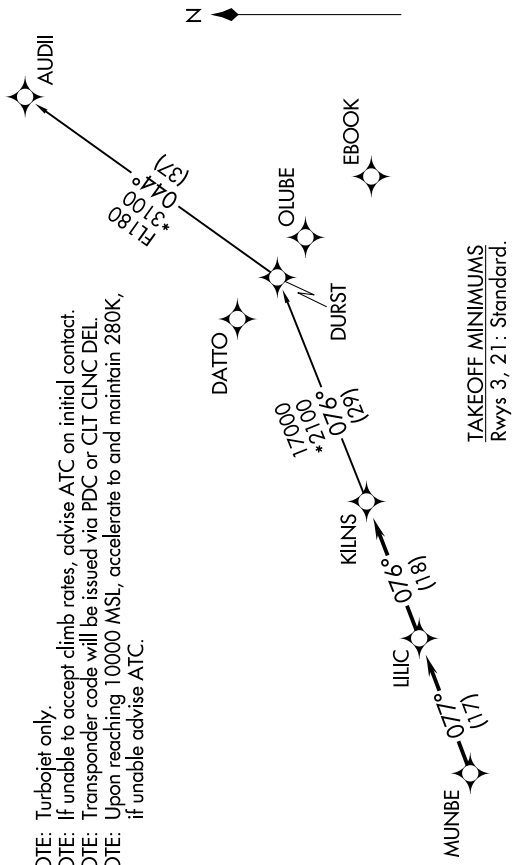
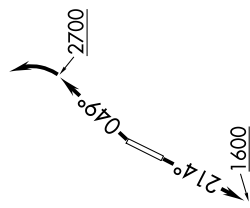
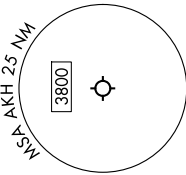
9200 UN 60 2020 UN 11 2-ES

CHARLOTTE DEP CON  
120.05 257.2  
ASOS  
135.725  
CLNC DEL  
127.2

RNAV 1 - DME/DME/IRU or GPS.  
RADAR required.

**TOP ALTITUDE:  
3000**

NOTE: Turbojet only.  
NOTE: If unable to accept climb rates, advise ATC on initial contact.  
NOTE: Transponder code will be issued via PDC or CLT CLNC DEL.  
NOTE: Upon reaching 10000 MSL, accelerate to and maintain 280K, if unable advise ATC.



NOTE: Chart not to scale.

## DEPARTURE ROUTE DESCRIPTION

**TAKEOFF RUNWAY 3:** Climb on heading 049° to 2700 before turning left, then on heading assigned by ATC, thence. . .  
**TAKEOFF RUNWAY 21:** Climb on heading 214° to 1600 before proceeding north, then on heading assigned by ATC, thence. . .  
 . . . for RADAR vectors to MUNBE, then on depicted route to KILNS. Then on assigned transition. Maintain 3000, expect filed altitude 10 minutes after departure.

**AUDII TRANSITION (KILNS6.AUDII)**

# KILNS SIX DEPARTURE (RNAV)

(KILNS6.KILNS) 14MAY26