

(KRITR7.KRITR) 26134

AL-6081 (FAA)

GASTONIA MUNI (AKH)
GASTONIA, NORTH CAROLINA

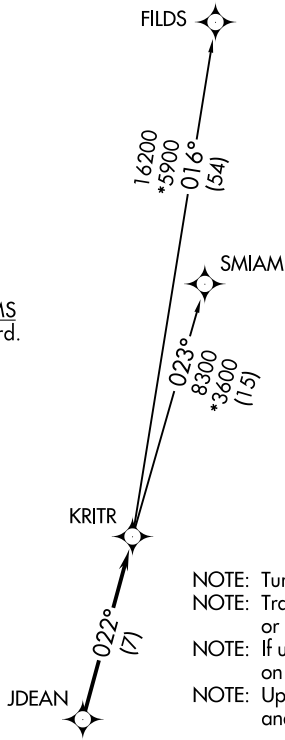
KRITR SEVEN DEPARTURE (RNAV)

CHARLOTTE DEP CON
120.05 307.8
ASOS
135.725
CLNC DEL
127.2

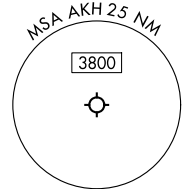
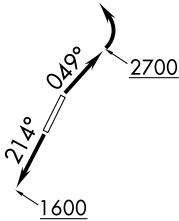
**TOP ALTITUDE:
3000**

RNAV 1 - DME/DME/IRU or GPS.
RADAR required.

TAKEOFF MINIMUMS
Rwys 3, 21: Standard.



- NOTE: Turbojet only.
- NOTE: Transponder code will be issued via PDC or CLT CLNC DEL.
- NOTE: If unable to accept climb rates, advise ATC on initial contact.
- NOTE: Upon reaching 10000 MSL, accelerate to and maintain 280K, if unable advise ATC.



NOTE: Chart not to scale.



DEPARTURE ROUTE DESCRIPTION

TAKEOFF RUNWAY 3: Climb on heading 049° to 2700 before turning left, then on heading assigned by ATC, thence. . .
TAKEOFF RUNWAY 21: Climb on heading 214° to 1600 before proceeding north, then on heading assigned by ATC, thence. . .

. . .for RADAR vectors to JDEAN, then on track 022° to KRITR, then on assigned transition. Maintain 3000. Expect filed altitude 10 minutes after departure.

FILDS TRANSITION (KRITR7.FILDS)
SMIAM TRANSITION (KRITR7.SMIAM)

KRITR SEVEN DEPARTURE (RNAV)

GASTONIA, NORTH CAROLINA
GASTONIA MUNI (AKH)

(KRITR7.KRITR) 14MAY26

SE-2, 11 JUN 2026 to 09 JUL 2026

SE-2, 11 JUN 2026 to 09 JUL 2026