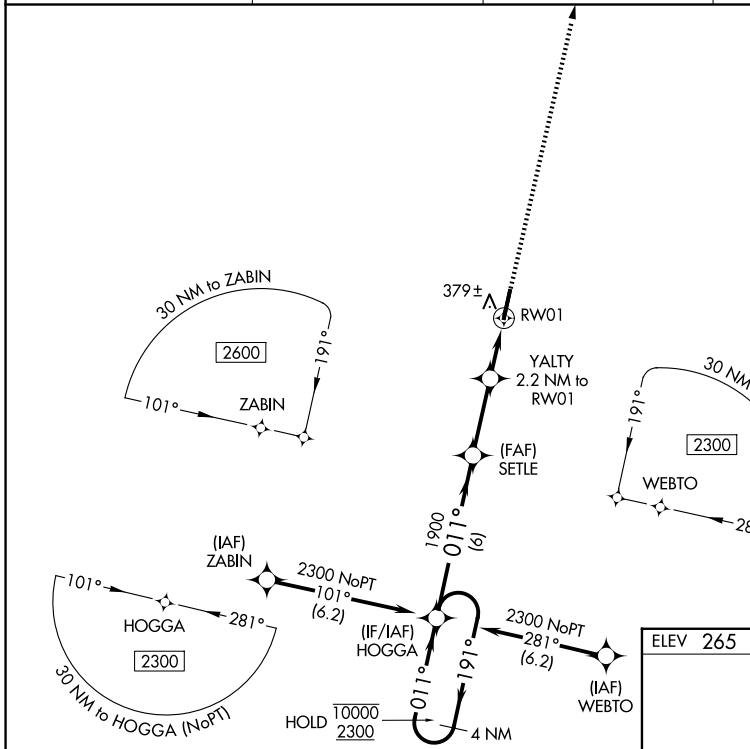
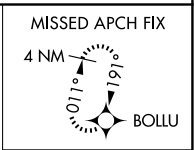


WAAS CH 81824 W01A	APP CRS 011°	Rwy Ldg TDZE 253 Apt Elev 265	6008
--	------------------------	---	-------------

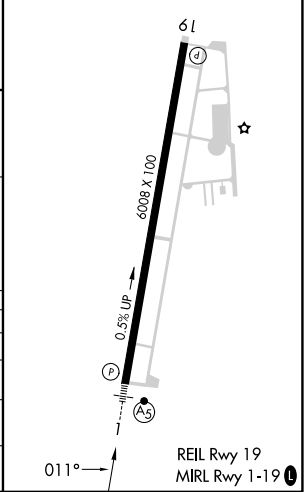
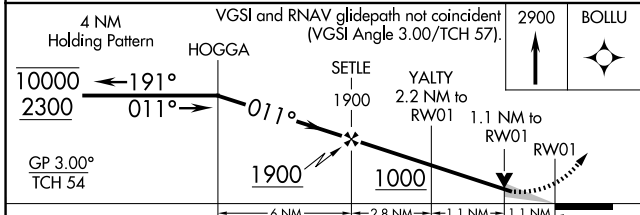
RNAV (GPS) RWY 1

SEARCY RGNL (SRC)

RNP APCH - GPS.		MALSR	MISSED APPROACH: Climb to 2900 direct BOLLU and hold, continue climb-in-hold to 2900.
<p>⚠ For uncompensated Baro-VNAV systems, LNAV/VNAV NA below -15°C or above 54°C. Circling NA for Cats B and C west of Rwy 1-19. For inop ALS, increase LNAV/VNAV all Cats visibility to 3/8 SM.</p>			
AWOS-3PT 128.325	LITTLE ROCK APP CON 119.75 291.775	CLNC DEL 119.75	UNICOM 122.7 (CTAF) 0



ELEV 265	TDZE 253
----------	----------



CATEGORY	A	B	C	D
LPV DA	453-1/2	200 (200-1/2)		NA
LNAV/VNAV DA	537-1/2	284 (300-1/2)		NA
LNAV MDA	640-1/2	387 (400-1/2)	640-5/8 387 (400-5/8)	NA
CIRCLING	760-1	495 (500-1)	780-1 1/2 515 (600-1 1/2)	NA

SC-1, 11 JUN 2026 to 09 JUL 2026

SC-1, 11 JUN 2026 to 09 JUL 2026