

WAAS CH 86224 W19A	APP CRS 191°	Rwy Ldg TDZE 265 Apt Elev 265	6008
--	------------------------	---	-------------

RNAV (GPS) RWY 19

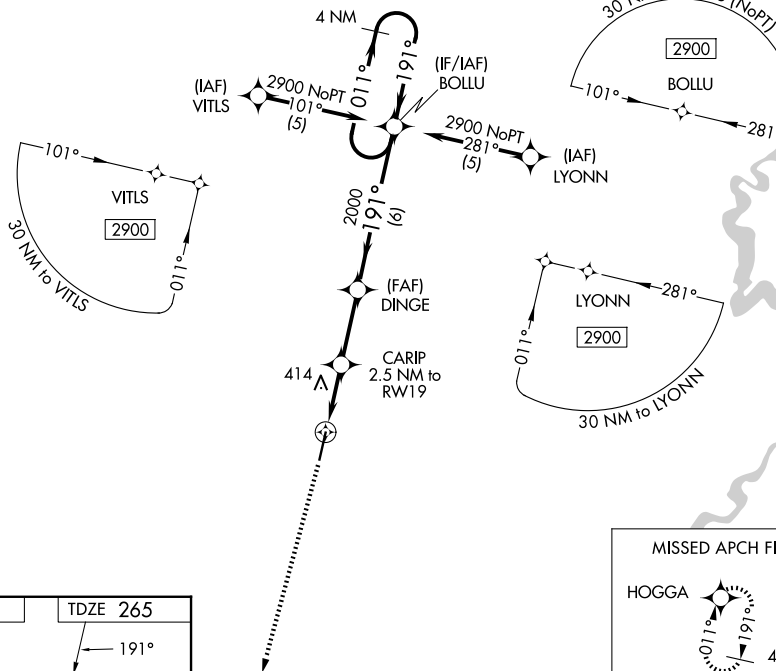
SEARCY RGNL (SRC)

RNP APCH-GPS

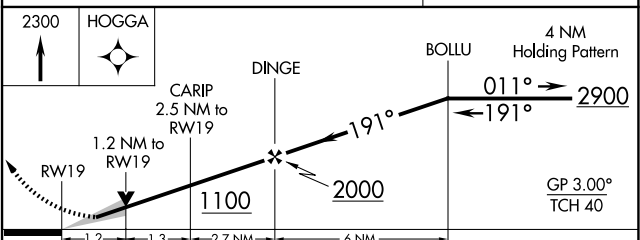
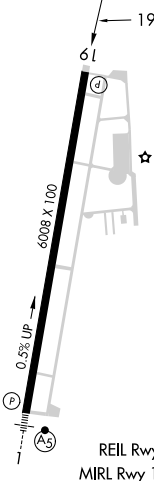
When local altimeter setting not received, use Bill and Hillary Clinton Nil/Adams Fld altimeter setting: increase LPV DA to 604 feet and all visibilities ¼ SM; increase all MDAs 100 feet and LNAV and Circling Cat C visibility ¼ SM. VDP NA with Bill and Hillary Clinton Nil/Adams Fld altimeter setting. Circling NA for Cats B and C west of Rwy 1-19.

MISSED APPROACH:
Climb to 2300 direct HOGGA and hold.

AWOS-3PT 128.325	LITTLE ROCK APP CON 119.75 291.775	CLNC DEL 119.75	UNICOM 122.7 (CTAF) 0
----------------------------	--	---------------------------	---------------------------------



ELEV 265	TDZE 265
----------	----------



CATEGORY	A	B	C	D
LPV DA	515-¾	250 (300-¾)		NA
LNAV/VNAV DA	NA			
LNAV MDA	680-1	415 (500-1)	680-1½ 415 (500-1½)	NA
CIRCLING	760-1	496 (500-1)	780-1½ 515 (600-1½)	NA

SC-1, 11 JUN 2026 to 09 JUL 2026

SC-1, 11 JUN 2026 to 09 JUL 2026