

WAAS CH 63238 W36A	APP CRS 001°	Rwy Ldg 3202 TDZE 551 Apt Elev 551
--	------------------------	---

RNAV (GPS) RWY 36

HOLLY SPRINGS-MARSHALL COUNTY (M41)

RNP APCH-GPS.

NA Baro-VNAV NA. Helicopter visibility reduction below $\frac{3}{4}$ SM NA.
Use Olive Branch altimeter setting; when not received, use Oxford altimeter setting and increase LPV DA to 873, LNAV/VNAV DA to 883 and all MDA 20 feet; increase LPV all Cats and LNAV Cat C visibility $\frac{1}{8}$ mile.

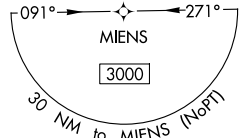
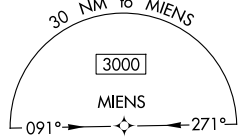
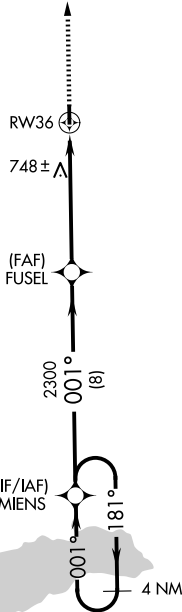
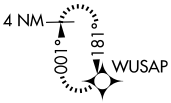
MISSED APPROACH: Climb to 3000 direct WUSAP and hold.

OLV AWOS-3
119.925

MEMPHIS APP CON
125.8 338.3

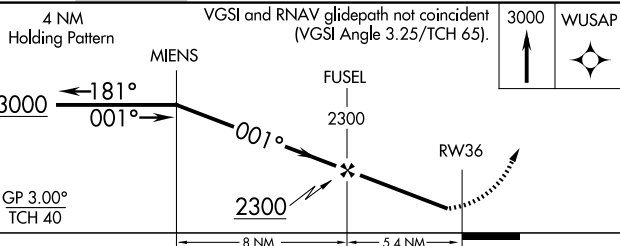
UNICOM
122.8 (CTAF)

MISSED APCH FIX



SC-4, 11 JUN 2026 to 09 JUL 2026

SC-4, 11 JUN 2026 to 09 JUL 2026



CATEGORY	A	B	C	D
LPV DA	861-1	310 (400-1)		NA
LNAV/VNAV DA	871-1 $\frac{1}{8}$	320 (400-1 $\frac{1}{8}$)		NA
LNAV MDA	1060-1	509 (600-1)	1060-1 $\frac{3}{8}$ 509 (600-1 $\frac{3}{8}$)	NA
CIRCLING	1080-1 529 (600-1)	1100-1 549 (600-1)	1260-2 709 (800-2)	NA

