

| | | | |
|--|------------------------|-----------------------------|---|
| WAAS CH 99727 W28A | APP CRS 277° | Rwy Ldg TDZE Apt Elev | 4004 637 640 |
|--|------------------------|-----------------------------|---|

RNAV (GPS) RWY 28

CHEBOYGAN COUNTY (SLH)

RNP APCH.

▼ Night landing Rwy 17, 35 NA. Baro-VNAV NA when using Pellston altimeter setting. For uncompensated Baro-VNAV systems, LNAV/VNAV NA below -16°C (4°F) or above 54°C (130°F). Helicopter visibility reduction below ¾ SM NA. When local altimeter setting not received, use Pellston altimeter setting; increase all DA 41 feet and all MDA 60 feet and increase LNAV/VNAV all Cats visibility ¼ SM and LNAV Cat C visibility ½ SM.

MISSED APPROACH: Climb to 2600 direct CATAP and on track 282° to JATRA and hold.

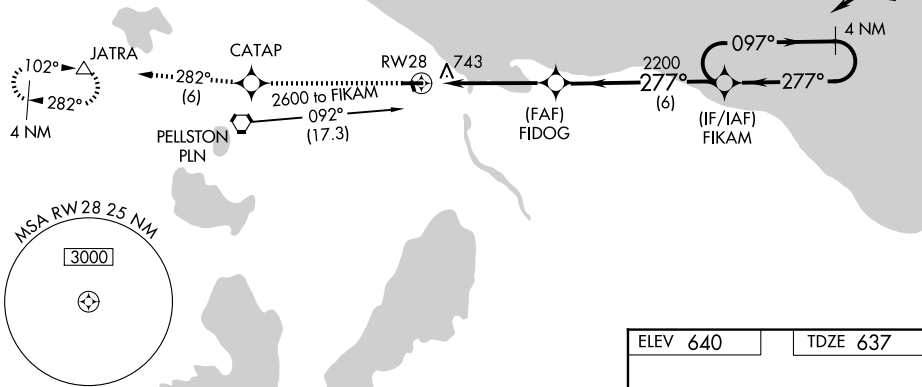
AWOS-3P
118.175

MINNEAPOLIS CENTER
134.6 354.05

UNICOM
122.8 (CTAF) 0

Procedure NA for arrivals on PLN VORTAC airway radials 023 CW 170.

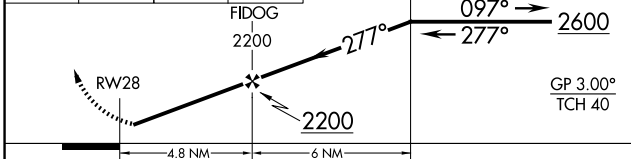
Procedure NA for arrivals at REEFY on V45 northbound.



EC-1, 11 JUN 2026 to 09 JUL 2026

EC-1, 11 JUN 2026 to 09 JUL 2026

| | | | | |
|------|-------|---------|-------|---|
| 2600 | CATAP | tr 282° | JATRA | VGSI and RNAV glidepath not coincident (VGSI Angle 4.00/TCH 25). 4 NM Holding Pattern |
|------|-------|---------|-------|---|



| | |
|----------|----------|
| ELEV 640 | TDZE 637 |
|----------|----------|

Diagram of the runway layout showing RWY 28, RWY 10, RWY 17, and RWY 35. Includes a 4004 x 75 ft runway with a 0.3% UP slope and a 1874 x 60 ft taxiway.

REIL Rwy 10 and 28
MIRL Rwy 10-28 and 17-35

| CATEGORY | A | B | C | D |
|--------------|--------------------|-------------------|----------------------|----|
| LPV DA | | 887-1 250 (300-1) | | NA |
| LNAV/VNAV DA | | 953-1 316 (400-1) | | NA |
| LNAV MDA | 1060-1 423 (500-1) | | 1060-1¼ 423 (500-1¼) | NA |
| CIRCLING | 1140-1 500 (500-1) | | 1140-1½ 500 (500-1½) | NA |