

# LAKES FIVE DEPARTURE

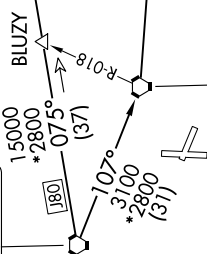
9202 2006 60 01 9202 2006 11 '8-ON

KANSAS CITY DEP CON  
118.4 307.35  
CINC DEL  
118.45

**TOP ALTITUDE:**  
10000

RADAR required. DME required.

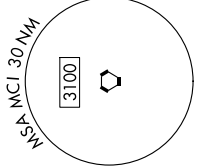
KANSAS CITY  
113.25 MCI  
Chan 79(Y)



NAPOLEON  
115.15 ANX  
Chan 98(Y)

COLUMBIA  
110.2 COU  
Chan 39

SPINNER  
112.7 SPI  
Chan 74



NOTE: Chart not to scale.

## DEPARTURE ROUTE DESCRIPTION

**TAKEOFF ALL RUNWAYS:** Climb on assigned heading for RADAR vectors to appropriate route. Maintain 10000 or as assigned by ATC. Expect filed altitude 10 minutes after departure.

**COLUMBIA TRANSITION (LAKES5.COU):** From over MCI VORTAC on MCI R-107 to ANX VORTAC, then on ANX R-088 and COU R-292 to COU VOR/DME.

**FRANC TRANSITION (LAKES5.FRANC):** From over MCI VORTAC on MCI R-107 to ANX VORTAC, then on ANX R-088 to FRANC.

**SPINNER TRANSITION (LAKES5.SPI):** From over MCI VORTAC on MCI R-075 and SPI R-265 to TWAIN, then on SPI R-265 to SPI VORTAC.

**TWAIN TRANSITION (LAKES5.TWAIN):** From over MCI VORTAC on MCI R-075 and SPI R-265 to TWAIN.



**TAKEOFF MINIMUMS**  
Rwys 11, 18, 29, 36: Standard.

# LAKES FIVE DEPARTURE