

(RACER8.MCI) 25051

# RACER EIGHT DEPARTURE

AL-6104 (FAA)

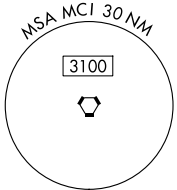
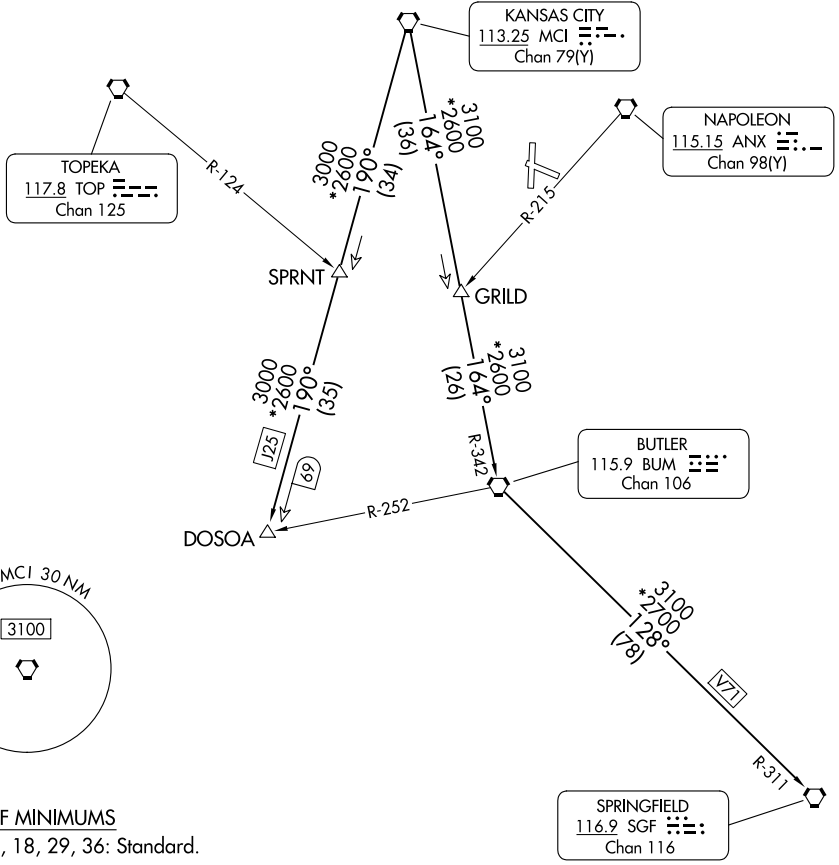
KANSAS CITY/LEE'S SUMMIT RGNL (LXT)

LEE'S SUMMIT, MISSOURI

KANSAS CITY DEP CON  
118.4 307.35  
CLNC DEL  
118.45

RADAR required.

**TOP ALTITUDE:**  
**10000**



**TAKEOFF MINIMUMS**  
Rwys 11, 18, 29, 36: Standard.

NOTE: Chart not to scale.

## DEPARTURE ROUTE DESCRIPTION

**TAKEOFF ALL RUNWAYS:** Climb on assigned heading for RADAR vectors to appropriate route. Maintain 10000 or as assigned by ATC, expect filed altitude 10 minutes after departure.

**BUTLER TRANSITION (RACER8.BUM):** From over MCI VORTAC on MCI R-164 and BUM R-342 to BUM VORTAC.

**DOSOA TRANSITION (RACER8.DOSOA):** From over MCI VORTAC on MCI R-190 to DOSOA.

**SPRINGFIELD TRANSITION (RACER8.SGF):** From over MCI VORTAC on MCI R-164 and BUM R-342 to BUM VORTAC, then on BUM R-128 and SGF R-311 to SGF VORTAC.

# RACER EIGHT DEPARTURE

(RACER8.MCI) 05OCT23

LEE'S SUMMIT, MISSOURI  
KANSAS CITY/LEE'S SUMMIT RGNL (LXT)

NC-3, 11 JUN 2026 to 09 JUL 2026

NC-3, 11 JUN 2026 to 09 JUL 2026