

ROYAL TWO DEPARTURE

AL-6104 (FAA)

KANSAS CITY/LEE'S SUMMIT RGNL (LX'T)

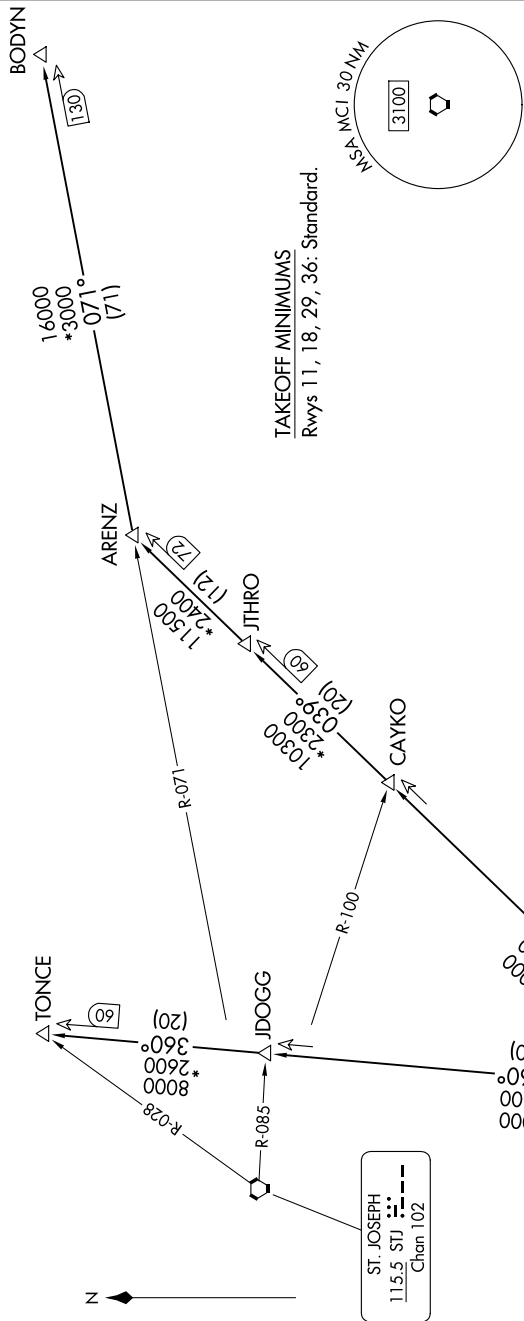
LEE'S SUMMIT, MISSOURI

9202 UNR 60 of 9202 UNR 11 '8-CN

KANSAS CITY DEP CON
118.4 307.35
CLNC DEL
118.45

RADAR and DME required.

TOP ALTITUDE:
10000



TAKEOFF MINIMUMS
Rwys 11, 18, 29, 36: Standard.

DEPARTURE ROUTE DESCRIPTION

▼ TAKEOFF ALL RUNWAYS: Climb on assigned heading for RADAR vectors to appropriate route. Maintain 10000, expect filed altitude 10 minutes after departure.

ARENZ TRANSITION (ROYAL2.ARENZ): From over MCI VORTAC on MCI R-039 to ARENZ.

BODYN TRANSITION (ROYAL2.BODYN): From over MCI VORTAC on MCI R-039 to ARENZ, then on STJ R-071 to BODYN.

TONCE TRANSITION (ROYAL2.TONCE): From over MCI VORTAC on MCI R-360 to TONCE.

NOTE: Chart not to scale.

NC-3, 11 JUN 2026 to 09 JUL 2026

ROYAL TWO DEPARTURE

(ROYAL2.MCI) 05SEP24

LEE'S SUMMIT, MISSOURI

KANSAS CITY/LEE'S SUMMIT RGNL (LX'T)