

(TIFTO8.MCI) 25051

# TIFTO EIGHT DEPARTURE

AL-6104 (FAA)

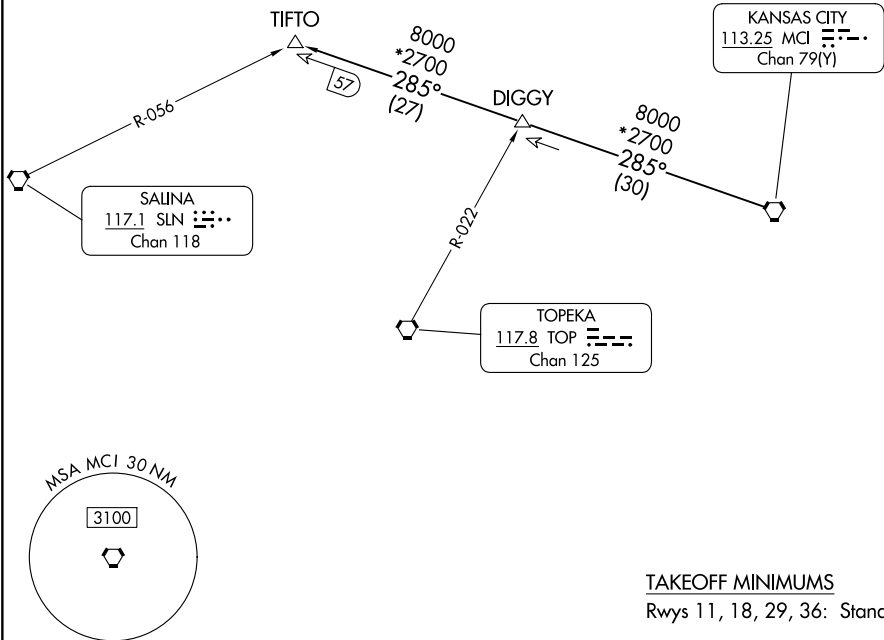
KANSAS CITY/LEE'S SUMMIT RGNL (LXT)

LEE'S SUMMIT, MISSOURI

**TOP ALTITUDE:  
10000**

RADAR and DME required.

KANSAS CITY DEP CON  
118.4 307.35  
CLNC DEL  
118.45



NC-3, 11 JUN 2026 to 09 JUL 2026

NC-3, 11 JUN 2026 to 09 JUL 2026

### TAKEOFF MINIMUMS

Rwys 11, 18, 29, 36: Standard.

NOTE: Chart not to scale



### DEPARTURE ROUTE DESCRIPTION

**TAKEOFF ALL RUNWAYS:** Climb on assigned heading for RADAR vectors to appropriate route. Maintain 10000, expect filed altitude 10 minutes after departure.

**TIFTO TRANSITION (TIFTO8.TIFTO):** From over MCI VORTAC on MCI R-285 to TIFTO.

# TIFTO EIGHT DEPARTURE

(TIFTO8.MCI) 05OCT23

LEE'S SUMMIT, MISSOURI

KANSAS CITY/LEE'S SUMMIT RGNL (LXT)