

VORTAC ANX <b>115.15</b> Chan <b>98</b> (Y)	APP CRS <b>229°</b>	Rwy Ldg TDZE Apt Elev <b>N/A</b> <b>1004</b>
---	------------------------	--

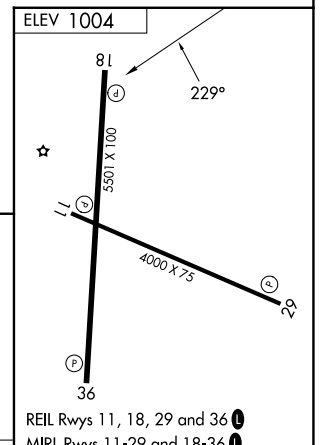
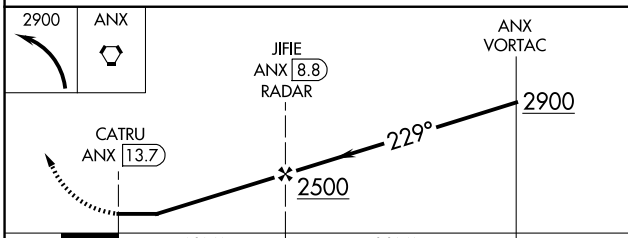
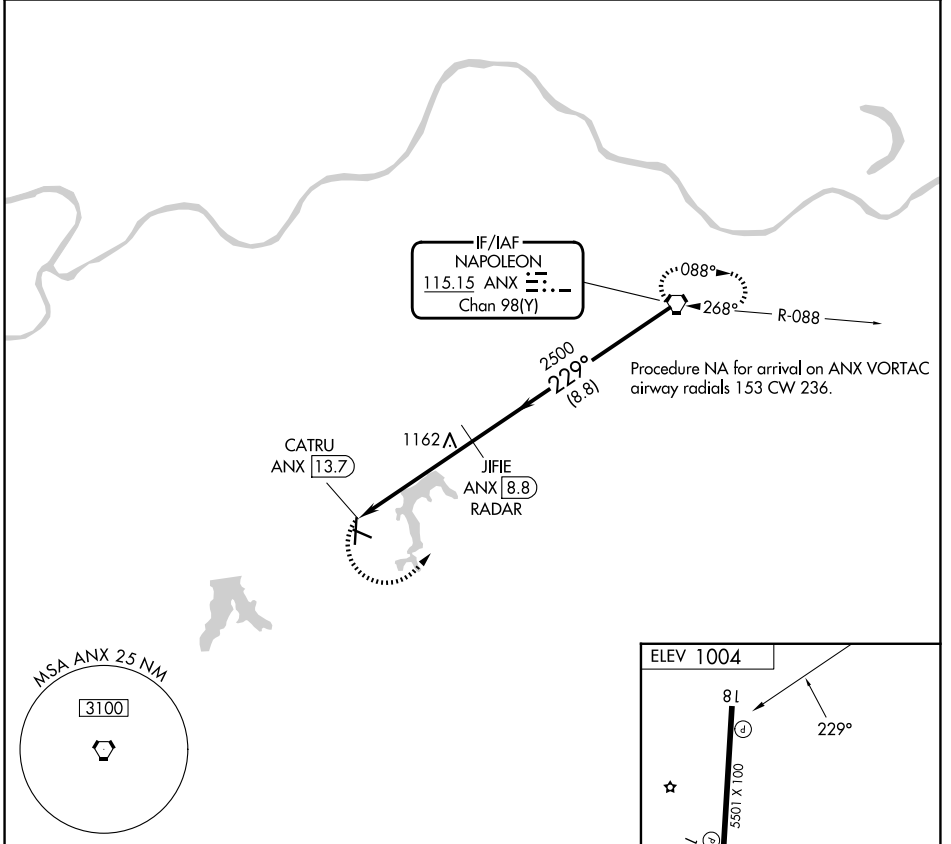
# VOR-A

KANSAS CITY/LEE'S SUMMIT RGNL (LX'T)

**⚠** DME or RADAR required. When local altimeter setting not received, use Kansas City Downtown/Wheeler Fld altimeter setting and increase all MDA 80 feet, and Cat C and D visibility ¼ mile.

**⚠** MISSED APPROACH: Climbing left turn to 2900 direct ANX VORTAC and hold.

ASOS <b>124.175</b>	KANSAS CITY APP CON <b>118.4 307.35</b>	UNICOM <b>122.8</b> (CTAF) <b>📞</b>
------------------------	--	--



CATEGORY	A	B	C	D	FAF to MAP 4.9 NM					
CIRCLING	1440-1 436 (500-1)	1540-1 536 (600-1)	1780-2¼ 776 (800-2¼)	1780-2½ 776 (800-2½)	Knots	60	90	120	150	180
					Min:Sec	4:54	3:16	2:27	1:58	1:38

# VOR-A

NC-3, 11 JUN 2026 to 09 JUL 2026

NC-3, 11 JUN 2026 to 09 JUL 2026