

(WLDCT6.MCI) 25051

WILDCAT SIX DEPARTURE

AL-6104 (FAA)

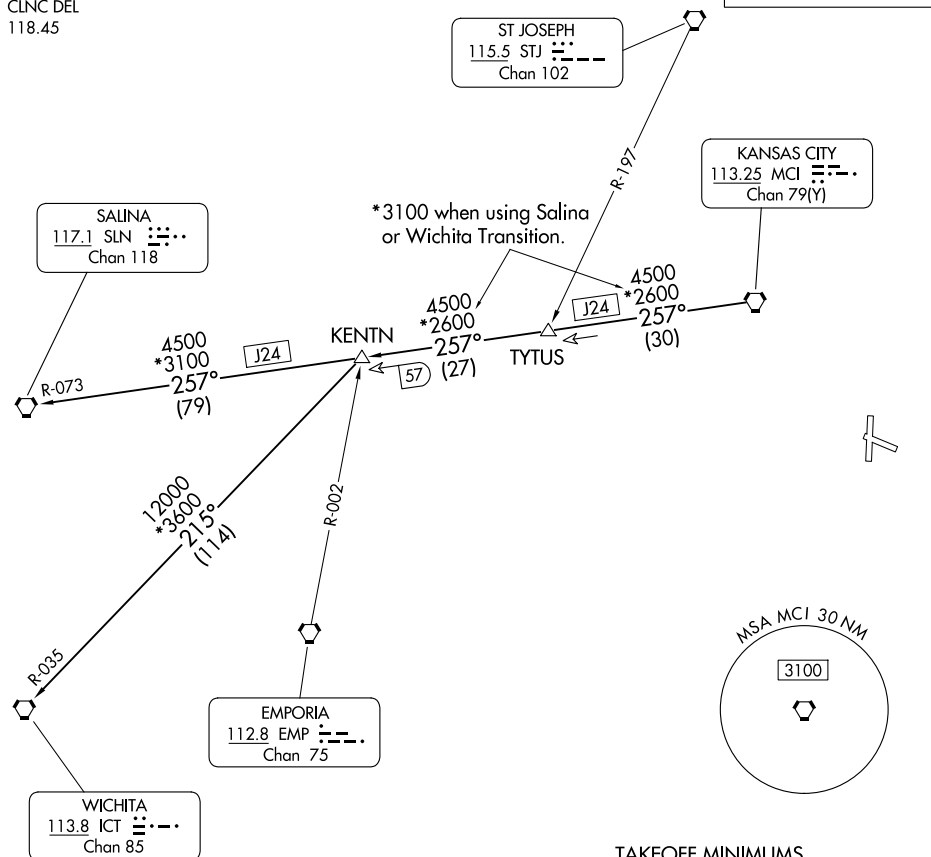
KANSAS CITY/LEE'S SUMMIT RGNL (LX'T)

LEE'S SUMMIT, MISSOURI

KANSAS CITY DEP CON
118.4 307.35
CLNC DEL
118.45

RADAR required.

**TOP ALTITUDE:
10000**



TAKEOFF MINIMUMS
Rwys 11, 18, 29, 36: Standard.

NOTE: Chart not to scale.

DEPARTURE ROUTE DESCRIPTION

TAKEOFF ALL RUNWAYS: Climb on assigned heading for RADAR vectors to appropriate route. Maintain 10000, expect filed altitude 10 minutes after departure.

KENTN TRANSITION (WLDCT6.KENTN): From over MCI VORTAC on MCI R-257 to KENTN.

SALINA TRANSITION (WLDCT6.SLN): From over MCI VORTAC on MCI R-257 and SLN R-073 to SLN VORTAC.

WICHITA TRANSITION (WLDCT6.ICT): From over MCI VORTAC on MCI R-257 to KENTN, then on ICT R-035 to ICT VORTAC.

WILDCAT SIX DEPARTURE

(WLDCT6.MCI) 05OCT23

LEE'S SUMMIT, MISSOURI

KANSAS CITY/LEE'S SUMMIT RGNL (LX'T)

NC-3, 11 JUN 2026 to 09 JUL 2026

NC-3, 11 JUN 2026 to 09 JUL 2026