

(YODUH2.YODUH) 25219

AL-6114 (FAA)

PLEASANTON MUNI (PEZ)  
PLEASANTON, TEXAS

# YODUH TWO DEPARTURE (RNAV)

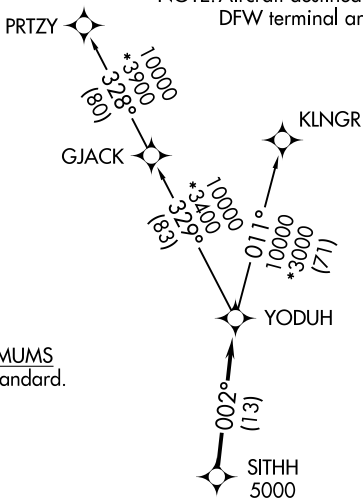
SAN ANTONIO DEP CON  
125.7 290.225  
CLNC DEL  
121.375

RNAV 1 - DME/DME IRU or GPS.

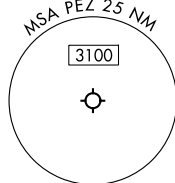
RADAR required for non-GPS equipped aircraft.  
RADAR required.

**TOP ALTITUDE:  
ASSIGNED BY ATC**

NOTE: Aircraft destined for airports north/northeast of DFW terminal area must file the KLNGR Transition.



TAKEOFF MINIMUMS  
Rwys 16, 34: Standard.



NOTE: Chart not to scale.



## DEPARTURE ROUTE DESCRIPTION

TAKEOFF RUNWAY 16: Climb on heading 157° or as assigned by ATC, for vectors to SITHH, thence. . .

TAKEOFF RUNWAY 34: Climb on heading 337° or as assigned by ATC, for vectors to SITHH, thence. . .

. . .on track 002° to YODUH, then on transition. Maintain ATC assigned altitude. Expect filed altitude 10 minutes after departure.

KLNGR TRANSITION (YODUH2.KLNGR)

PRTZY TRANSITION (YODUH2.PRTZY)

YODUH TWO DEPARTURE (RNAV)  
(YODUH2.YODUH) 07AUG25

PLEASANTON, TEXAS  
PLEASANTON MUNI (PEZ)

SC-3, 11 JUN 2026 to 09 JUL 2026

SC-3, 11 JUN 2026 to 09 JUL 2026