

WAAS CH <b>99725</b> <b>W34A</b>	APP CRS <b>335°</b>	Rwy Ldg TDZE Apt Elev	<b>5010</b> <b>665</b> <b>689</b>
--	------------------------	-----------------------------	---

# RNAV (GPS) RWY 34

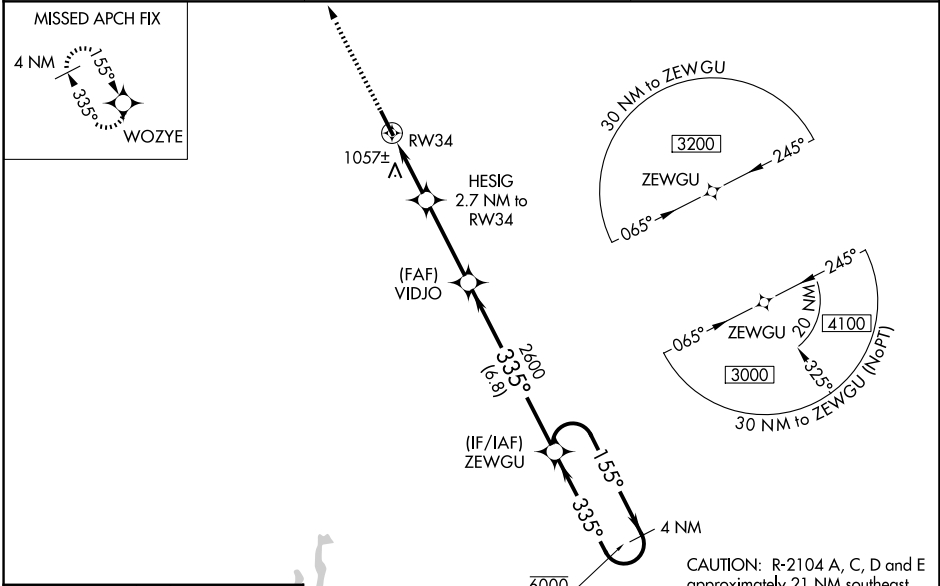
ABERNATHY FLD (GZS)

RNP APCH - GPS.

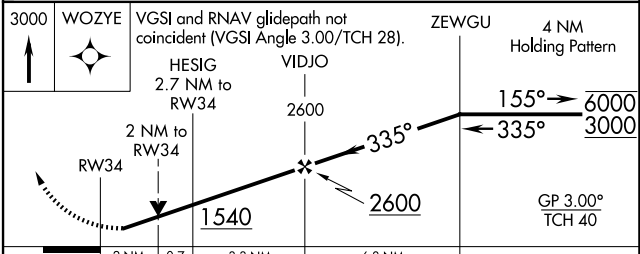
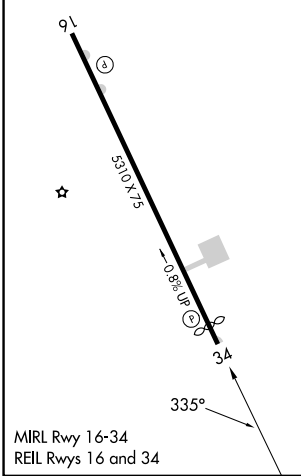
**NA** Baro-VNAV NA when using MDQ altimeter setting. For uncompensated Baro-VNAV systems, LNAV/VNAV NA below -16°C or above 54°C. Rwy 34 helicopter visibility reduction below ¾ SM NA. When local altimeter setting not received, use MDQ altimeter setting: increase LPV DA to 996 feet; increase LNAV/VNAV DA to 1524 feet and all visibilities 1½ SM; increase all MDAs 100 feet and LNAV visibility Cat B ¼ SM, Cats C and D ½ SM, and Circling visibility Cats A and B ¼ SM and Cat C ½ SM.

**MISSED APPROACH:**  
Climb to 3000 direct WOZYE and hold.

AWOS-3 <b>118,275</b>	MEMPHIS CENTER <b>125.85 379,25</b>	UNICOM <b>122.8 (CTAF)</b>
--------------------------	--	-------------------------------



ELEV <b>689</b>	TDZE <b>665</b>
-----------------	-----------------



CATEGORY	A	B	C	D
LPV DA	915-1		250 (300-1)	
LNAV/VNAV DA	1443-2½		778 (800-2½)	
LNAV MDA	1320-1	655 (700-1)	1320-1⅞	655 (700-1⅞)
CIRCLING	1420-1 731 (800-1)	1480-1 791 (800-1)	1480-2¼ 791 (800-2¼)	1640-3 951 (1000-3)

SE-1, 11 JUN 2026 to 09 JUL 2026

SE-1, 11 JUN 2026 to 09 JUL 2026