

WAAS CH 70523 W28A	APP CRS 277°	Rwy Ldg 3013 TDZE 237 Apt Elev 237
--	------------------------	---

RNAV (GPS) RWY 28

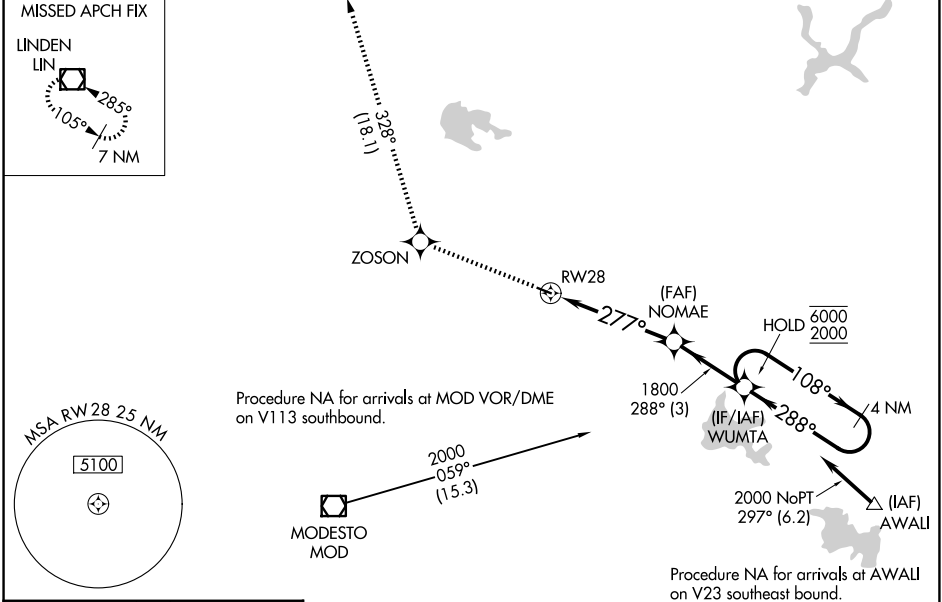
OAKDALE (O27)

RNP APCH-GPS.

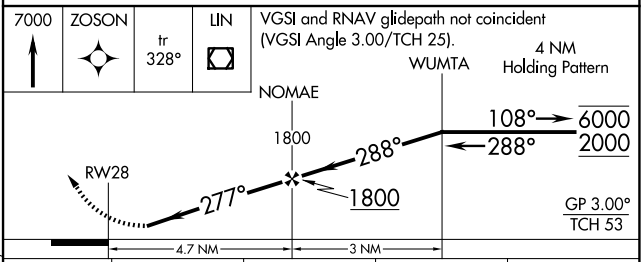
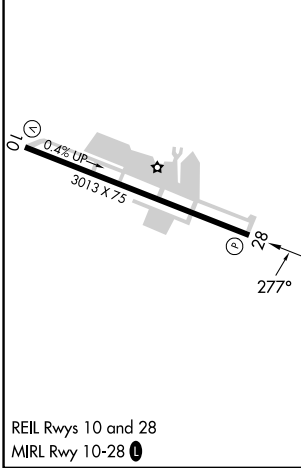
NA Rwy 28 helicopter visibility reduction below 3/4 SM NA. Baro-VNAV NA. Use Modesto altimeter setting; when not received, use Stockton altimeter setting; increase LPV DA to 581 feet and all visibilities 1/8 SM; increase LNAV/VNAV DA to 728 feet; increase all MDAs 40 feet.

MISSED APPROACH: Climb to 7000 direct ZOSON and on track 328° to LIN VOR/DME and hold, continue climb-in-hold to 7000.

MOD ASOS 127.7	NORCAL APP CON 125.1 363.2	UNICOM 122.8 (CTAF) 0
--------------------------	--------------------------------------	---------------------------------



ELEV 237	TDZE 237
----------	----------



CATEGORY	A	B	C	D
LPV DA		547-7/8 310 (400-7/8)		NA
LNAV/VNAV DA		694-13/8 457 (500-13/8)		NA
LNAV MDA	820-1	583 (600-1)	820-13/4 583 (600-13/4)	NA
CIRCLING	820-1	583 (600-1)	920-2 683 (700-2)	NA

SW-2, 11 JUN 2026 to 09 JUL 2026

SW-2, 11 JUN 2026 to 09 JUL 2026