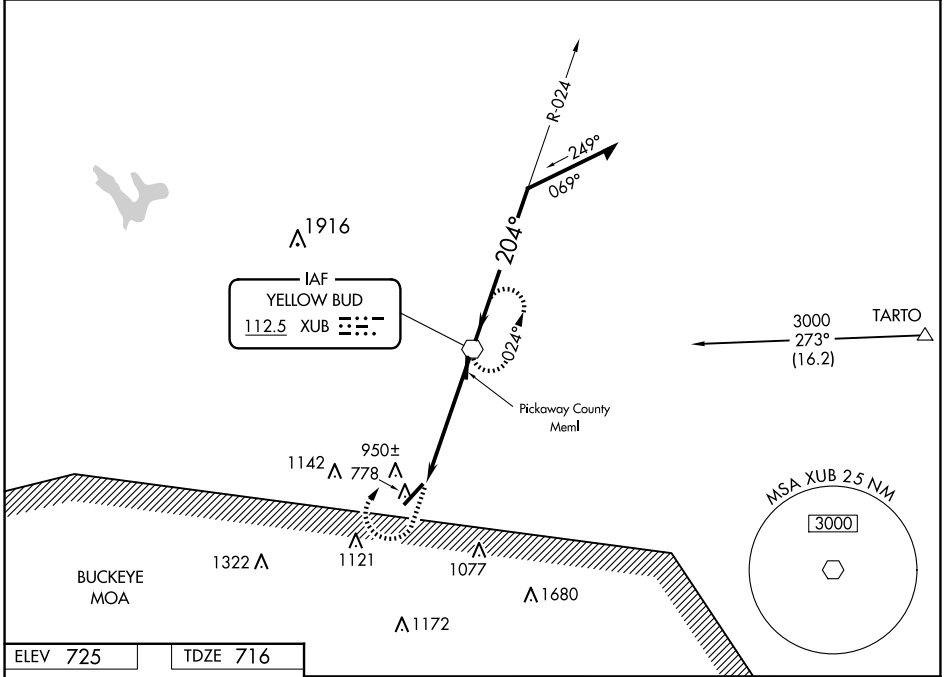


VOR XUB 112.5	APP CRS 204°	Rwy Idg TDZE Apt Elev	5405 716 725
-------------------------	------------------------	-----------------------------	---

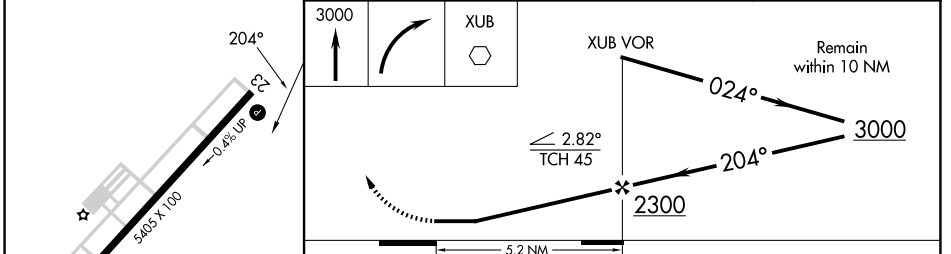
VOR RWY 23
ROSS COUNTY (R/ZT)

<p>▼ NA When local altimeter setting not received, use Rickenbacker Intl altimeter setting. When VGSI is inop, Straight-in and Circling Rwy 23 procedures NA at night.</p>	<p>MISSED APPROACH: Climb to 3000 then right turn direct XUB VOR and hold.</p>
--	--

AWOS-3 119.225	COLUMBUS APP CON 134.0 279.6	UNICOM 122.8 (CTAF)	123.0 0
--------------------------	--	-------------------------------	----------------



ELEV 725	TDZE 716
----------	----------



CATEGORY	A		B		C		D	
	S-23	1220-1	504 (500-1)	1220-1½	504 (500-1½)			
CIRCLING	1340-1	615 (700-1)	1360-1	635 (700-1)	1500-2¼	775 (800-2¼)	1540-2¾	815 (900-2¾)
	RICKENBACKER INTL ALTIMETER SETTING MINIMUMS							
S-23	1280-1	564 (600-1)	1280-1⅝	564 (600-1⅝)				
CIRCLING	1400-1	675 (700-1)	1420-1	695 (700-1)	1560-2½	835 (900-2½)	1600-2¾	875 (900-2¾)

REIL Rwys 5 and 23 0
MIRL Rwy 5-23 0

FAF to MAP 5.2 NM

Knots	60	90	120	150	180
Min:Sec	5:12	3:28	2:36	2:05	1:44

EC-2, 11 JUN 2026 to 09 JUL 2026

EC-2, 11 JUN 2026 to 09 JUL 2026