

WAAS CH <b>65718</b> <b>W29A</b>	APP CRS <b>290°</b>	Rwy Idg TDZE Apt Elev	<b>4402</b> <b>2920</b> <b>2925</b>
--	------------------------	-----------------------------	---

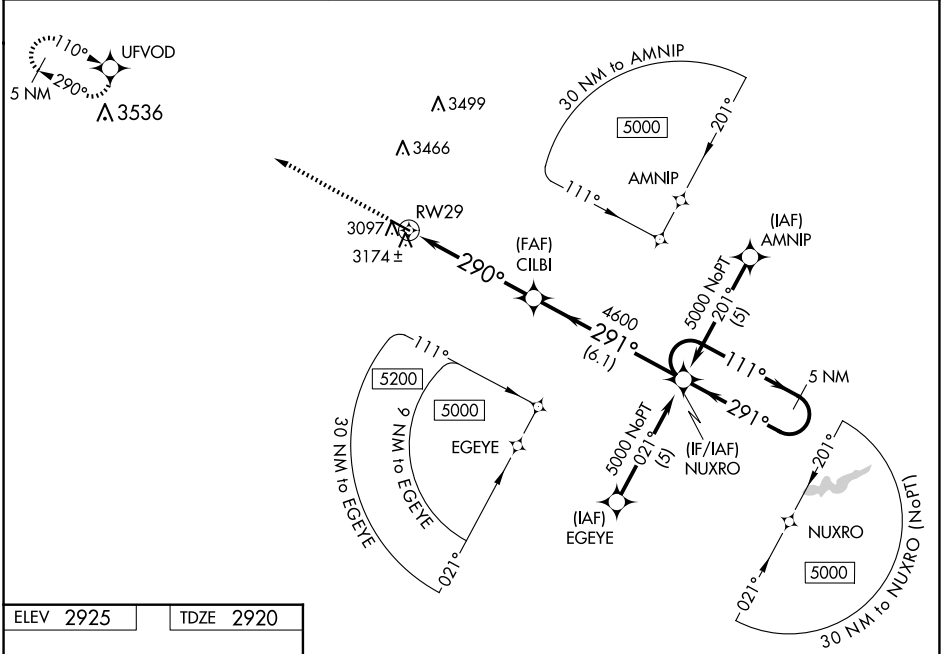
# RNAV (GPS) RWY 29

THOMAS COUNTY (TIF')

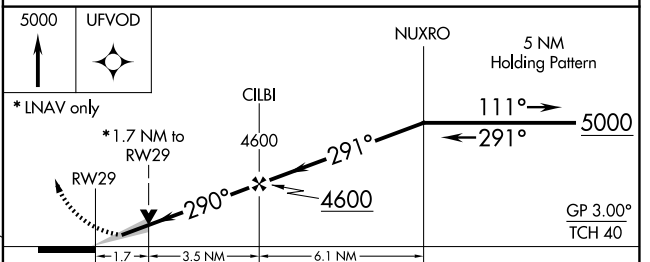
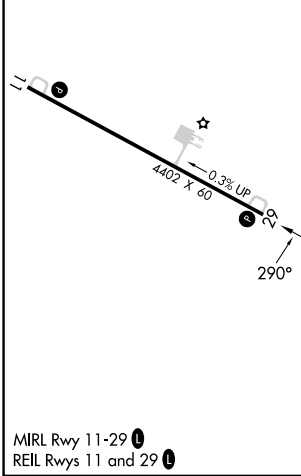
**⚠** Baro-VNAV NA when using North Platte altimeter setting. For uncompensated Baro-VNAV systems, LNAV/VNAV NA below -20°C (-4°F) or above 54°C (130°F).  
**⚠** DME/DME RNP-0.3 NA. When local altimeter setting not received use North Platte altimeter setting and increase all DA 137 feet and all MDA 140 feet; increase LPV and LNAV/VNAV Cats A and B visibility ½ mile. VDP NA with North Platte altimeter setting.

MISSED APPROACH: Climb to 5000 direct UFVOD and hold.

AWOS-3 <b>120,825</b>	DENVER CENTER <b>127.95 338.2</b>	CTAF <b>122.9</b>
--------------------------	--------------------------------------	----------------------



ELEV 2925	TDZE 2920
-----------	-----------



CATEGORY	A	B	C	D
LPV DA	3170-1	250 (300-1)		NA
LNAV/VNAV DA	3444-2	524 (600-2)		NA
LNAV MDA	3480-1	560 (600-1)		NA
CIRCLING	3480-1	555 (600-1)		NA

NC-2, 11 JUN 2026 to 09 JUL 2026

NC-2, 11 JUN 2026 to 09 JUL 2026