

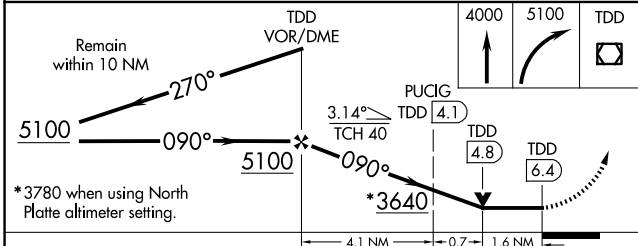
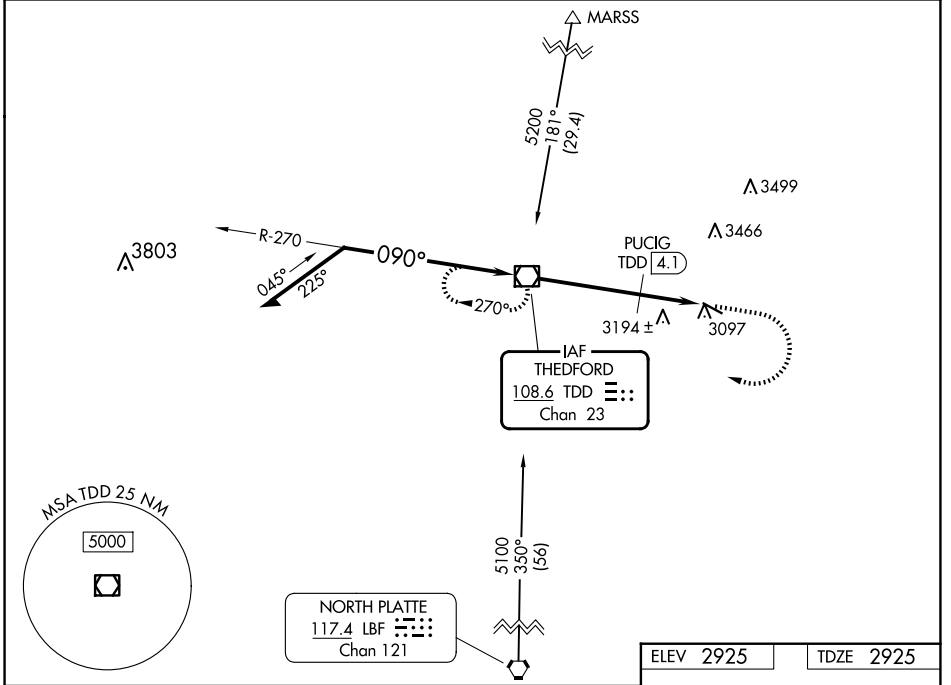
VOR/DME TDD <b>108.6</b> Chan <b>23</b>	APP CRS <b>090°</b>	Rwy Idg TDZE Apt Elev	<b>4402</b> <b>2925</b> <b>2925</b>
---	------------------------	-----------------------------	---

**VOR RWY 11**  
THOMAS COUNTY (TIF')

**NA** Visibility reduction by helicopters NA. When local altimeter setting not received, use North Platte altimeter setting and increase all MDA 140 feet, increase S-11 Cat B and Circling Cat B visibility 1/4 mile. VDP NA when using North Platte altimeter setting.

MISSED APPROACH: Climb to 4000 then climbing right turn to 5100 direct TDD VOR/DME and hold.

AWOS-3 <b>120.825</b>	DENVER CENTER <b>127.95 338.2</b>	CTAF <b>122.9</b>
--------------------------	--------------------------------------	----------------------



ELEV 2925	TDZE 2925
MIRL Rwy 11-29 REIL Rwys 11 and 29 FAF to MAP 6.4 NM	
Knots	60 90 120 150 180
Min:Sec	6:30 4:20 3:15 2:36 2:10

CATEGORY	A	B	C	D
S-11	3640-1	715 (800-1)		NA
CIRCLING	3640-1	715 (800-1)		NA
PUCIG FIX MINIMUMS				
S-11	3500-1	575 (600-1)		NA
CIRCLING	3500-1	575 (600-1)		NA

NC-2, 11 JUN 2026 to 09 JUL 2026

NC-2, 11 JUN 2026 to 09 JUL 2026