

VOR/DME TDD 108.6 Chan 23	APP CRS 272°	Rwy Idg TDZE Apt Elev	4402 2920 2925
---	------------------------	-----------------------------	---

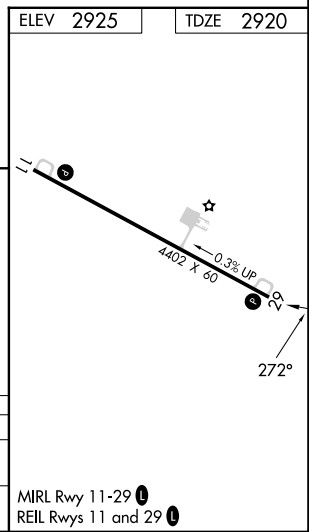
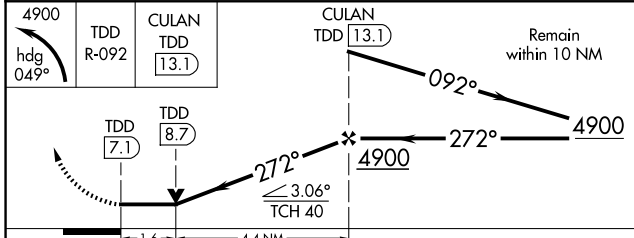
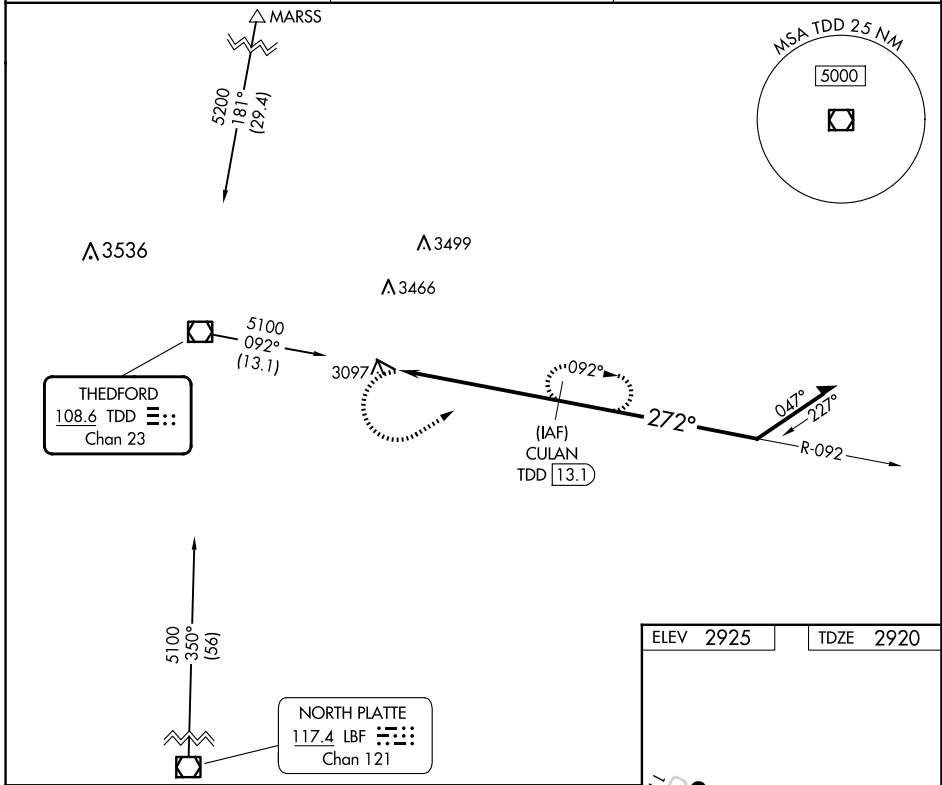
VOR RWY 29
THOMAS COUNTY (TIF')

DME required.

NA Rwy 29 helicopter visibility reduction below 3/4 SM NA. When local altimeter setting not received, use North Platte altimeter setting and increase all MDA 140 feet. VDP NA when using North Platte altimeter setting.

MISSED APPROACH: Climbing left turn to 4900 on heading 049° and TDD R-092 to CULAN/TDD 13.1 DME and hold.

AWOS-3 120.825	DENVER CENTER 127.95 338.2	CTAF 122.9
--------------------------	--------------------------------------	----------------------



CATEGORY	A	B	C	D
S-29	3480-1	560 (600-1)		NA
CIRCLING	3480-1	555 (600-1)		NA

NC-2, 11 JUN 2026 to 09 JUL 2026

NC-2, 11 JUN 2026 to 09 JUL 2026