

WAAS CH 49132 W22A	APP CRS 224°	Rwy Ldg TDZE Apt Elev	4001 823 823
----------------------------------------	------------------------	-----------------------------	-----------------------------------------

RNAV (GPS) RWY 22

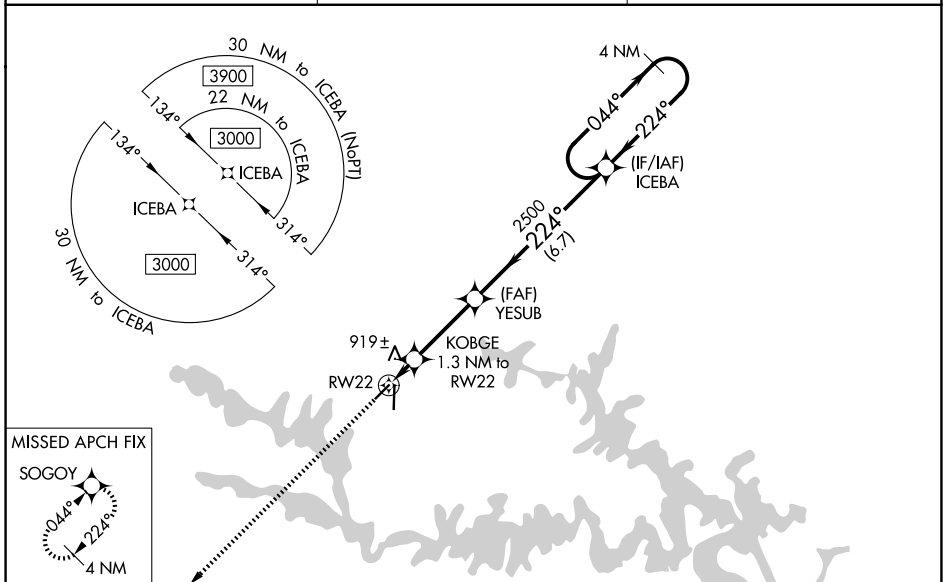
CLINTON RGNL (GLY)

RNP APCH.

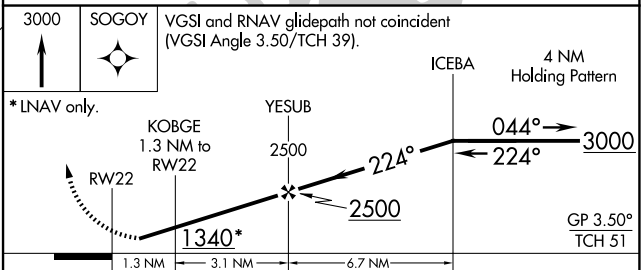
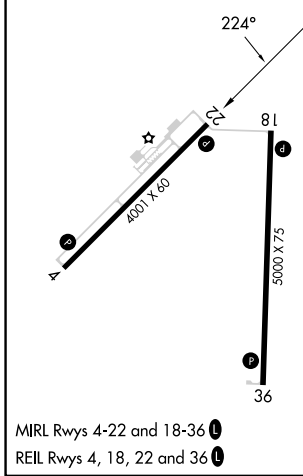
▼ For uncompensated Baro-VNAV systems, LNAV/VNAV NA below -16°C or above 54°C. When local altimeter setting not received, use Whiteman AFB altimeter setting and increase all DA 61 feet and all MDA 80 feet. Increase LNAV/VNAV all Cats and LNAV Cat C visibility ¼ mile. Circling Rwy 4 NA at night. Rwy 22 helicopter visibility reduction below ¾ SM NA. Baro-VNAV NA when using Whiteman altimeter setting.

MISSED APPROACH: Climb to 3000 direct SOGOY and hold.

AWOS-3PT 120.475	WHITEMAN APP CON ★ 127.45	UNICOM 122.8 (CTAF) 0
----------------------------	-------------------------------------	---------------------------------



ELEV 823	TDZE 823
----------	----------



CATEGORY	A	B	C	D
LPV DA	1115-1	292 (300-1)		NA
LNAV/VNAV DA	1216-1½	393 (400-1½)		NA
LNAV MDA	1180-1	357 (400-1)		NA
CIRCLING	1280-1 457 (500-1)	1300-1 477 (500-1)	1340-1½ 517 (600-1½)	NA

NC-3, 11 JUN 2026 to 09 JUL 2026

NC-3, 11 JUN 2026 to 09 JUL 2026