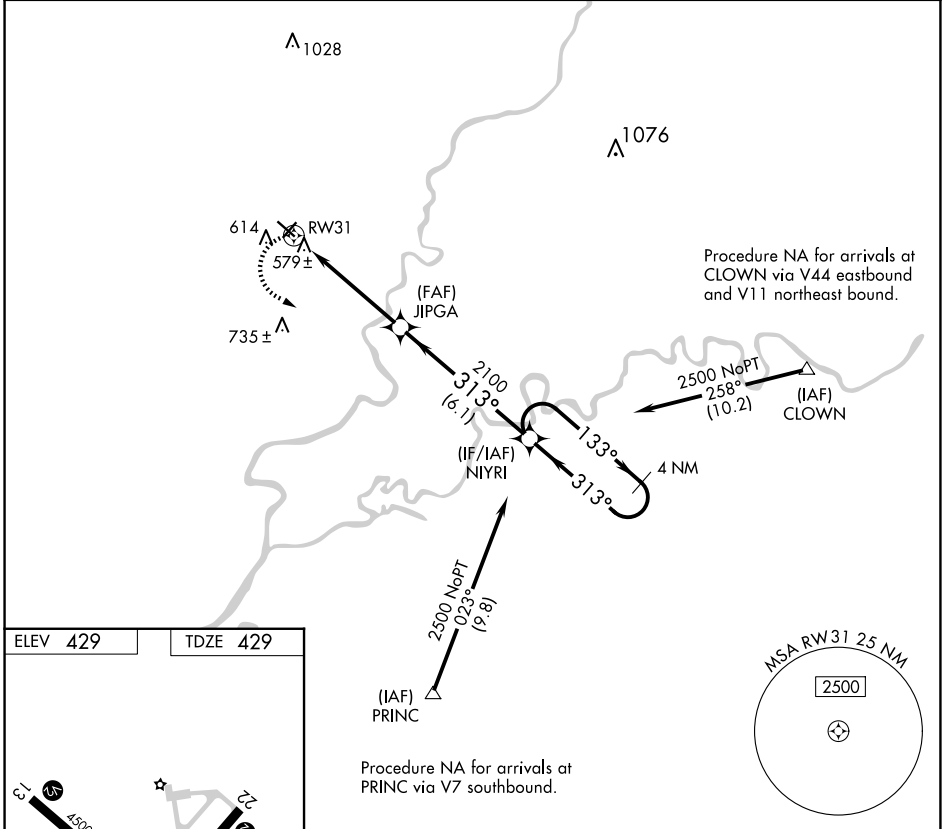


APP CRS <b>313°</b>	Rwy Idg TDZE Apt Elev	<b>4500</b> <b>429</b> <b>429</b>
------------------------	-----------------------------	---

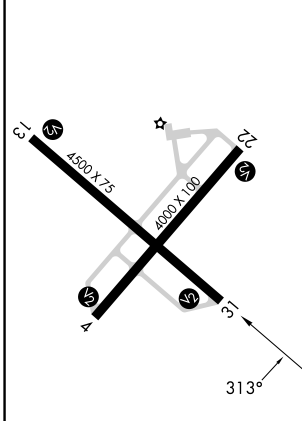
# RNAV (GPS) RWY 31

MOUNT CARMEL MUNI (AJG)

RNP APCH.		MISSED APPROACH: Climbing left turn to 2500 direct NIYRI and hold.
<p>▼ ▲ NA</p> <p>When local altimeter setting not received, use Lawrenceville altimeter setting and increase all MDA 40 feet and increase LNAV Cat D visibility ½ mile.</p>		
AWOS-3 <b>134.9</b>	EVANSVILLE APP CON★ <b>125.6 343.7</b>	UNICOM <b>122.7 (CTAF) 0</b>



ELEV 429	TDZE 429
----------	----------



REIL Rwy's 4, 13, 22 and 31  
MIRL Rwy's 4-22 and 13-31

2500	NIYRI	VGSIs and descent angles not coincident (VGSi Angle 3.00/TCH 25).		4 NM	NIYRI	Holding Pattern
RWY 31		JIPGA	2100	133°	313°	2500
5 NM		6.1 NM				
CATEGORY	A	B	C	D		
LNAV MDA	840-1 411 (500-1)		840-1¼ 411 (500-1¼)			

EC-3, 11 JUN 2026 to 09 JUL 2026

EC-3, 11 JUN 2026 to 09 JUL 2026