

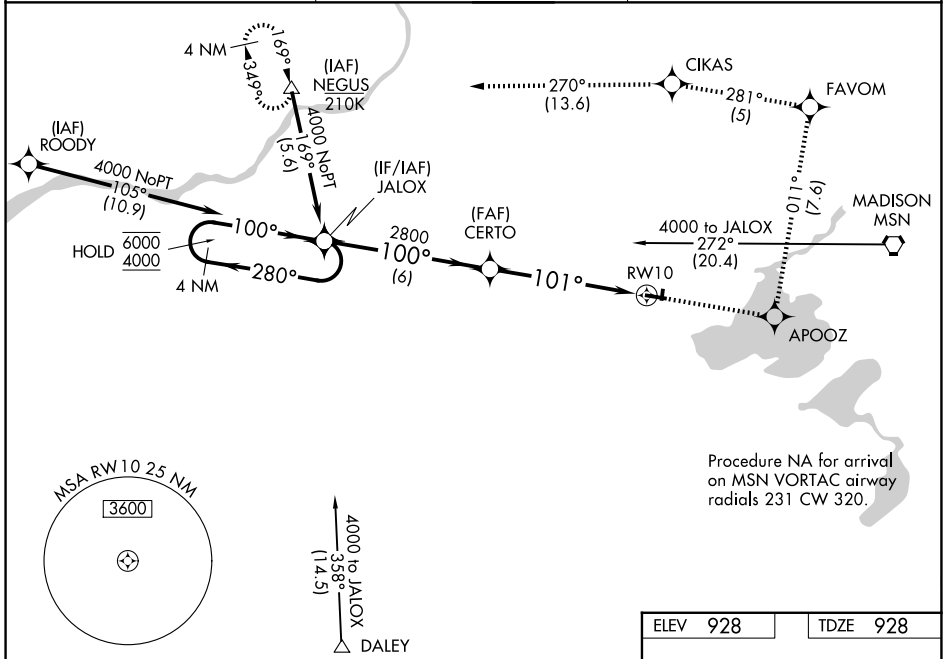
WAAS CH <b>62912</b> <b>W10A</b>	APP CRS <b>101°</b>	Rwy Ldg TDZE Apt Elev	<b>4001</b> <b>928</b> <b>928</b>
--	------------------------	-----------------------------	---

# RNAV (GPS) RWY 10

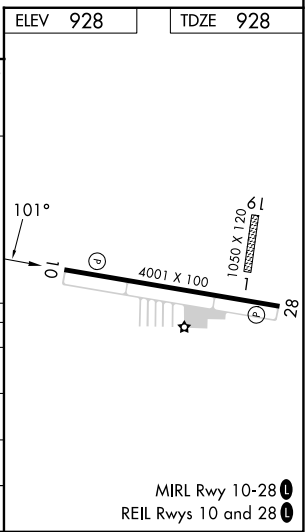
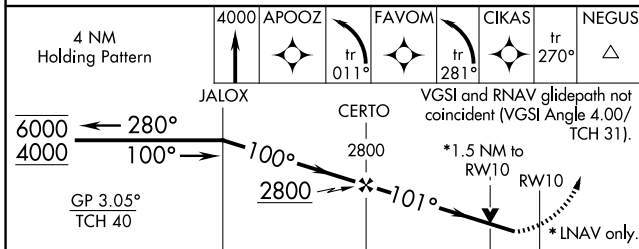
MIDDLETON MUNI/MOREY FLD (C29)

RNP APCH.	MISSED APPROACH: (Do not exceed 185K until APOOZ) Climb to 4000 direct APOOZ then climbing left turn on track 011° to FAVOM then climbing left turn on track 281° to CIKAS and track 270° to NEGUS and hold.
<p>▼ Circling NA to Rws 1 and 19. Helicopter visibility reduction below ¾ SM NA.</p> <p>▲ For uncompensated Baro-VNAV systems, LNAV/VNAV NA below -16°C or above 54°C.</p>	

AWOS-3 <b>118.675</b>	MADISON APP CON * <b>135.45 343.7</b>	UNICOM <b>123.0 (CTAF) 0</b>
--------------------------	--	---------------------------------



Procedure NA for arrival on MSN VORTAC airway radials 231 CW 320.



CATEGORY	A	B	C	D
LPV DA	1408-1 3/8	480 (500-1 3/8)		NA
LNAV/VNAV DA	1596-1 7/8	668 (700-1 7/8)		NA
LNAV MDA	1600-1	672 (700-1)	1600-1 7/8 672 (700-1 7/8)	NA
CIRCLING	1600-1 672 (700-1)	1620-1 692 (700-1)	1640-2 712 (800-2)	NA

MIRL Rwy 10-28 0  
REIL Rws 10 and 28 0

EC-3, 11 JUN 2026 to 09 JUL 2026

EC-3, 11 JUN 2026 to 09 JUL 2026