

APP CRS	Rwy Idg	2801
293°	TDZE	833
	Apt Elev	833

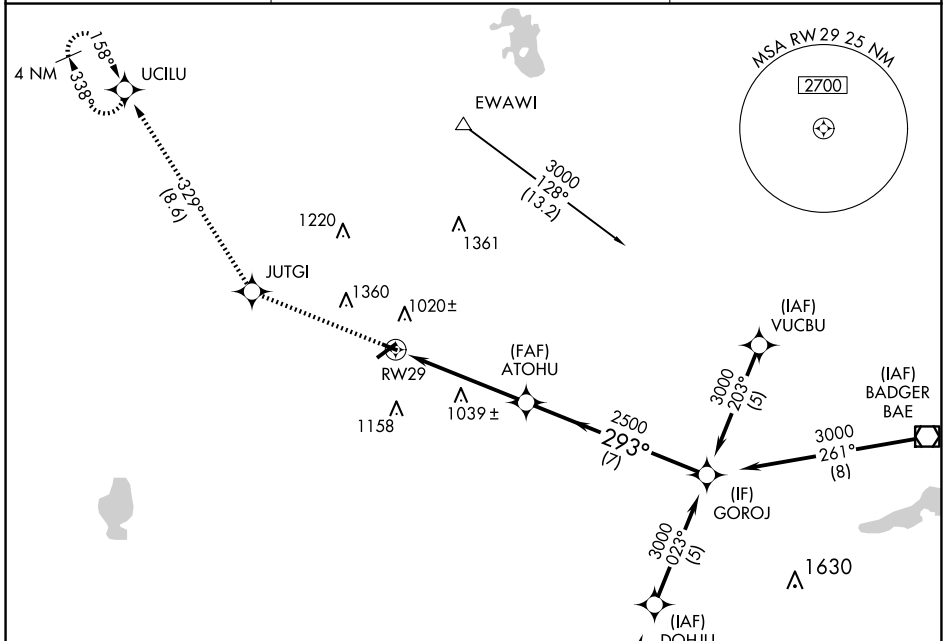
RNAV (GPS) RWY 29

WATERTOWN MUNI (RYV)

⚠ Circling to Rwy 23 NA at night. Rwy 29 helicopter visibility reduction below 1 SM NA. DME/DME RNP-0.3 NA. When local altimeter setting not received, use Dodge County altimeter setting and increase all MDAs 60 feet and LNAV visibility Cat C/D 1/8 SM.

MISSED APPROACH: Climb to 3000 direct JUTGI and right turn via 329° track to UCILU and hold.

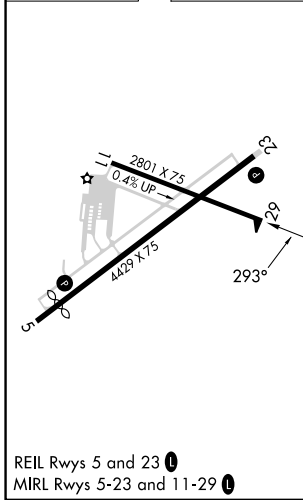
AWOS-3 119.975	MADISON APP CON * 119.15 343.7	UNICOM 122.8 (CTAF) 0
--------------------------	------------------------------------------	---------------------------------



EC-3, 11 JUN 2026 to 09 JUL 2026

EC-3, 11 JUN 2026 to 09 JUL 2026

ELEV 833	D	TDZE 833
----------	----------	----------



3000	JUTGI	UCILU	GOROJ	
↑	✦	↪ tr 329°	✦	
	RW29	ATOHU	3000	
		2500	293°	
	5 NM		7 NM	
CATEGORY	A	B	C	D
LNAV MDA	1400-1 567 (600-1)		1400-1 5/8 567 (600-1 5/8)	1400-1 3/4 567 (600-1 3/4)
CIRCLING	1400-1 567 (600-1)	1440-1 607 (700-1)	1720-2 3/4 887 (900-2 3/4)	1720-3 887 (900-3)