

APP CRS	Rwy Idg	4239
054°	TDZE	821
	Apt Elev	833

RNAV (GPS) RWY 5

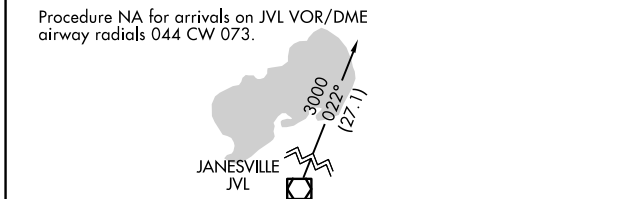
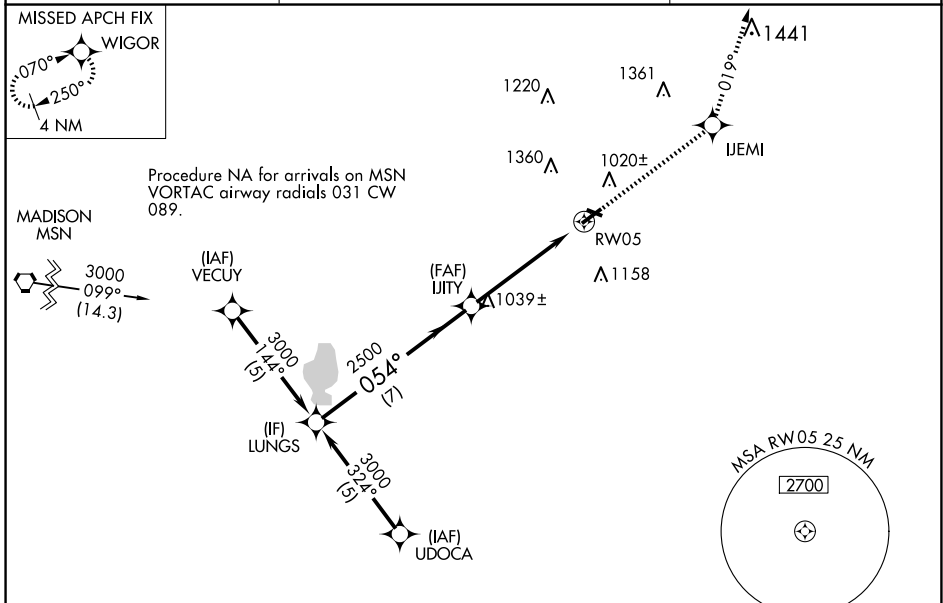
WATERTOWN MUNI (RYV)

RNP APCH.

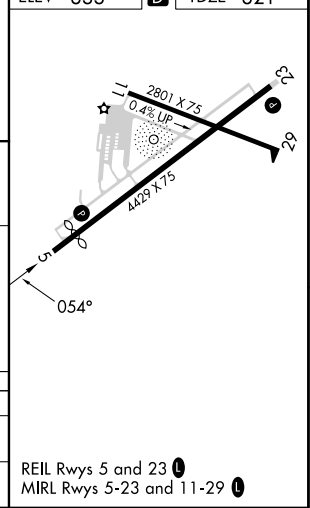
▼ Rwy 5 helicopter visibility reduction below 3/4 SM NA. When local altimeter setting not received, use Dodge County altimeter setting and increase all MDAs 60 feet, increase LNAV Cat C visibility 1/2 SM. Circling Rwy 23 NA at night.

MISSED APPROACH: Climb to 3000 direct IJEMI and left turn on 019° track to WIGOR and hold.

AWOS-3 119.975	MADISON APP CON * 119.15 343.7	UNICOM 122.8 (CTAF)
--------------------------	--	-------------------------------



ELEV 833	D	TDZE 821
----------	----------	----------



	3000	IJEMI	WIGOR
	↑	✧	✧
		tr	019°

CATEGORY	A	B	C	D
LNAV MDA	1440-1	619 (700-1)	1440-1 3/4 619 (700-1 3/4)	1440-2 619 (700-2)
CIRCLING	1440-1	607 (700-1)	1720-2 3/4 887 (900-2 3/4)	1720-3 887 (900-3)

EC-3, 11 JUN 2026 to 09 JUL 2026

EC-3, 11 JUN 2026 to 09 JUL 2026