

WAAS CH <b>82327</b> <b>W36A</b>	APP CRS <b>002°</b>	Rwy Idg TDZE <b>681</b> Apt Elev <b>698</b>	<b>4000</b> <b>681</b> <b>698</b>
--	------------------------	---	---

# RNAV (GPS) RWY 36

JASPER COUNTY (R.Z.L.)

RNP APCH.

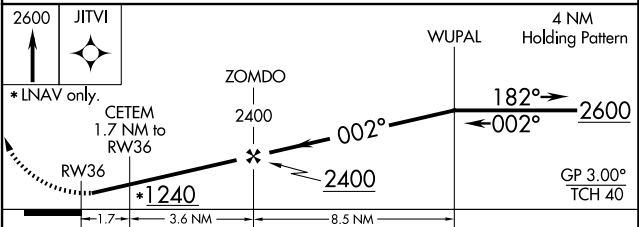
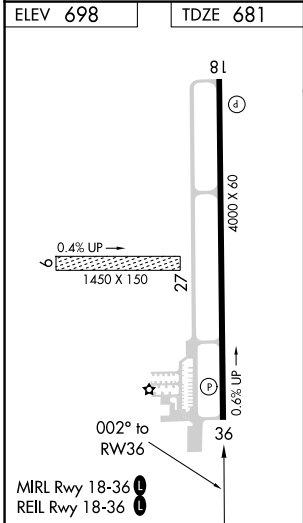
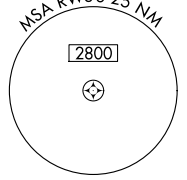
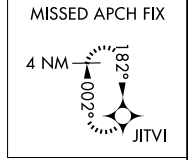
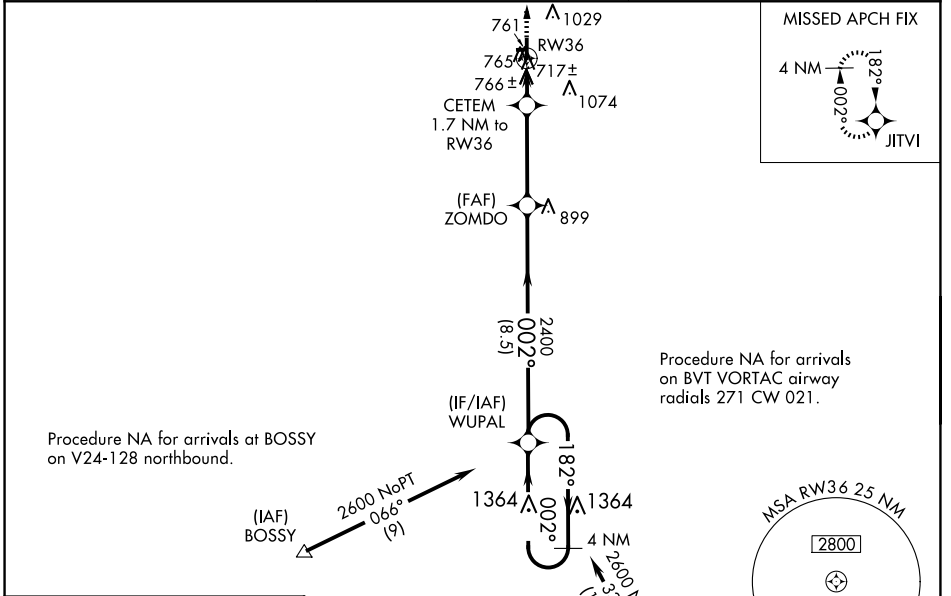
**⚠** Baro-VNAV NA when using Knox altimeter setting. For uncompensated Baro-VNAV systems, LNAV/VNAV NA below -22°C or above 54°C. When local altimeter setting not received use Knox altimeter setting and increase all DA 78 feet and all MDA 80 feet, increase LPV and LNAV/VNAV all Cats visibility 1/8 mile and LNAV and Circling Cat C visibility 1/4 mile. Rwy 36 helicopter visibility reduction below 1 SM NA. Circling NA to Rwy's 9 and 27.

**MISSED APPROACH:**  
Climb to 2600 direct  
JITVI and hold.

AWOS-3P  
**119.175**

CHICAGO CENTER  
**132.5 284.7**

UNICOM  
**122.8 (CTAF) 0**



CATEGORY	A	B	C	D
LPV DA		931-1 250 (300-1)		NA
LNAV/ VNAV DA		947-1 266 (300-1)		NA
LNAV MDA		1020-1 339 (400-1)		NA
CIRCLING	1120-1 422 (500-1)	1380-1 682 (700-1)	1440-2¼ 742 (800-2¼)	NA

EC-2, 11 JUN 2026 to 09 JUL 2026

EC-2, 11 JUN 2026 to 09 JUL 2026