

LONE STAR DEP CON
118.1 306.95
CTAF
122.8

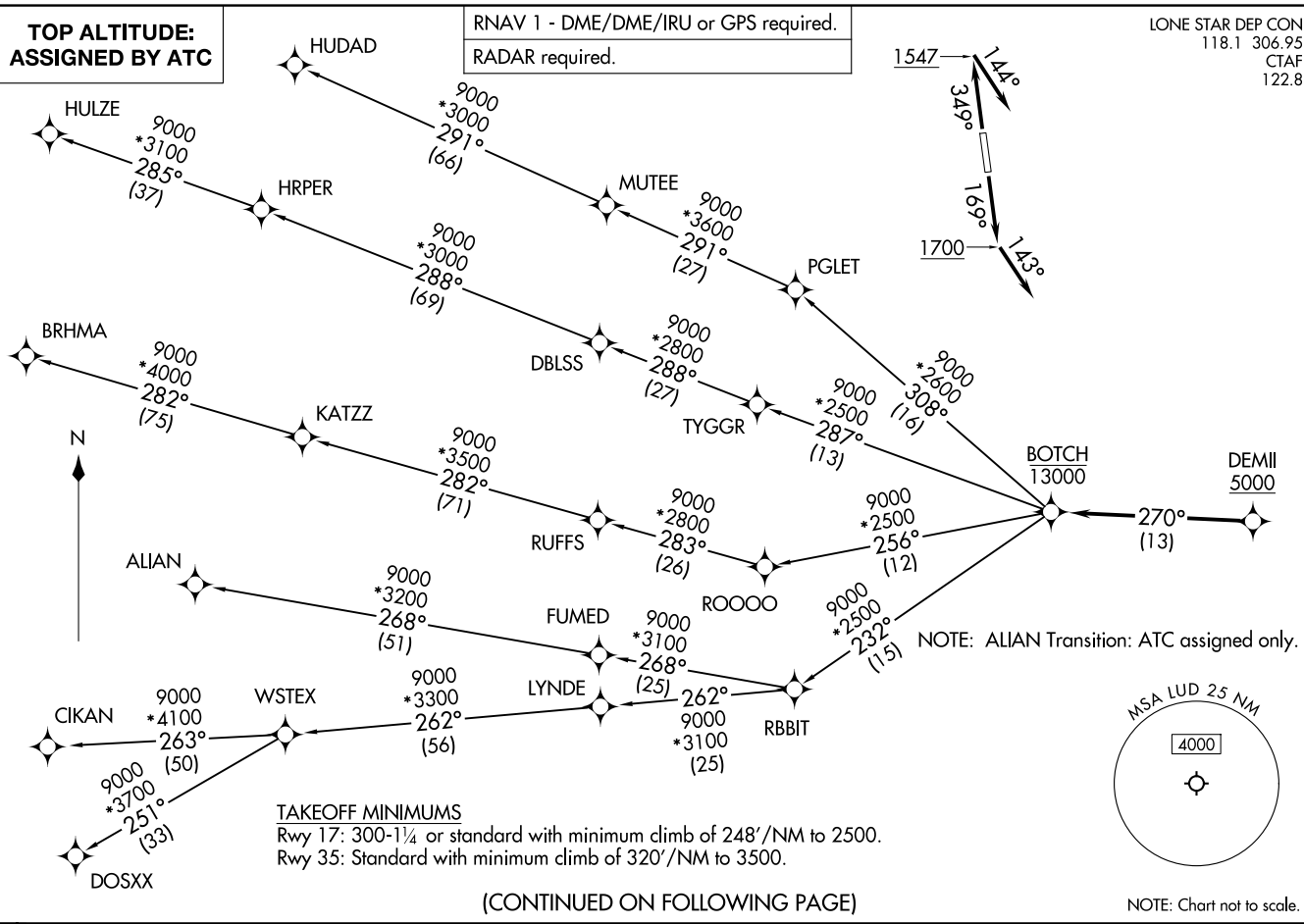
RNAV 1 - DME/DME/IRU or GPS required.
RADAR required.

**TOP ALTITUDE:
ASSIGNED BY ATC**

(BOTCH2.BOTCH) 26134
BOTCH TWO DEPARTURE (RNAV)

AL-6190 (FAA)

DECATUR MUNI (LTD)
DECATUR, TEXAS



(CONTINUED ON FOLLOWING PAGE)

BOTCH TWO DEPARTURE (RNAV)
(BOTCH2.BOTCH) 14MAY26

DECATUR, TEXAS
DECATUR MUNI (LTD)

BOTCH TWO DEPARTURE (RNAV)



DEPARTURE ROUTE DESCRIPTION

TAKEOFF RUNWAY 17: Climb on heading 169° to 1700, then on heading 143° or as assigned by ATC, for vectors to cross DEMII at or above 5000, thence. . .

TAKEOFF RUNWAY 35: Climb on heading 349° to 1547, then on heading 144° or as assigned by ATC, for vectors to cross DEMII at or above 5000, thence. . .

. . . on track 270° to cross BOTCH at or below 13000, then on (transition). Maintain ATC assigned altitude, expect filed altitude 10 minutes after departure.

ALIAN TRANSITION (BOTCH2.ALIAN)

BRHMA TRANSITION (BOTCH2.BRHMA)

CIKAN TRANSITION (BOTCH2.CIKAN)

DOSXX TRANSITION (BOTCH2.DOSXX)

HUDAD TRANSITION (BOTCH2.HUDAD)

HULZE TRANSITION (BOTCH2.HULZE)

WSTEX TRANSITION (BOTCH2.WSTEX)

SC-2, 11 JUN 2026 to 09 JUL 2026

SC-2, 11 JUN 2026 to 09 JUL 2026