

GARLAND SIX DEPARTURE
(GARL6.TT) 17AR25
DECATUR, TEXAS
DECATUR MUNI (LUD)

LONE STAR DEP CON
118.1 306.95
CTAF
122.8

**TOP ALTITUDE:
ASSIGNED BY ATC**

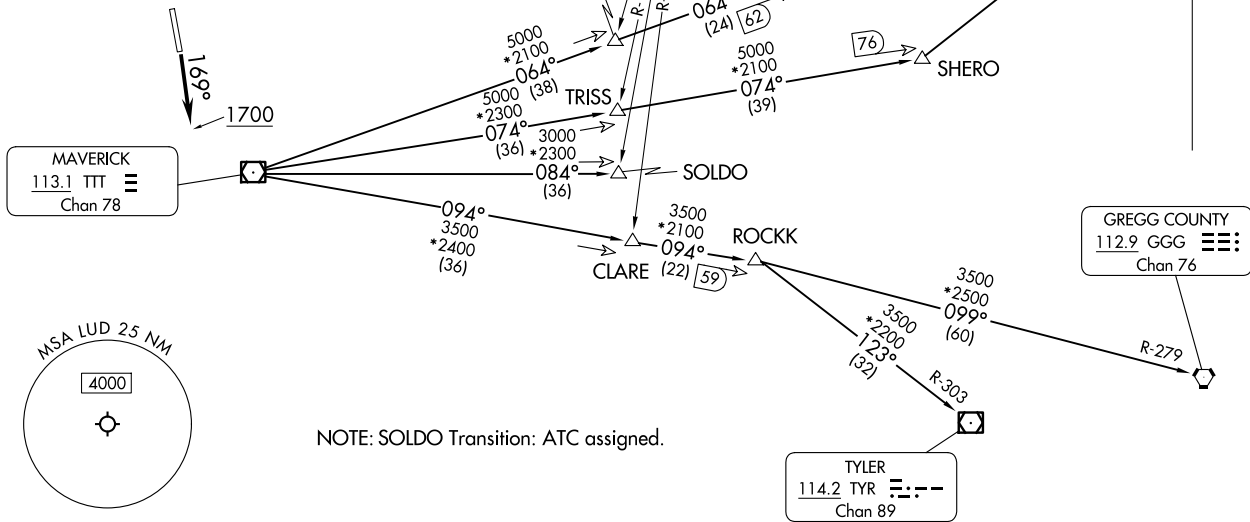
RADAR and DME required.

(GARL6.TT) 25107
GARLAND SIX DEPARTURE
AL-6190 (FAA)
DECATUR MUNI (LUD)
DECATUR, TEXAS

TAKEOFF MINIMUMS

Rwy 17: 300-1¼ or standard with minimum climb of 248'/NM to 2500.

Rwy 35: Standard with minimum climb of 320'/NM to 3500.



NOTE: Chart not to scale.

(CONTINUED ON FOLLOWING PAGE)

GARLAND SIX DEPARTURE



DEPARTURE ROUTE DESCRIPTION

TAKEOFF RUNWAY 17: Climb on heading 169° to 1700 before proceeding north.

When entering controlled airspace, fly assigned heading for RADAR vectors to appropriate route. Maintain ATC assigned altitude.

GREGG COUNTY TRANSITION (GARL6.GGG): From over TTT VOR/DME on TTT R-094 to ROCKK, then on GGG R-279 to GGG VORTAC.

PARIS TRANSITION (GARL6.PRX): From over TTT VOR/DME on TTT R-064 to ECKEY, then on PRX R-221 to PRX VOR/DME.

SOLDO TRANSITION (GARL6.SOLDO): From over TTT VOR/DME on TTT R-084 to SOLDO.

TEXARKANA TRANSITION (GARL6.TXK): From over TTT VOR/DME on TTT R-074 to SHERO, then on TXK R-244 to TXK VORTAC.

TYLER TRANSITION (GARL6.TYR): From over TTT VOR/DME on TTT R-094 to ROCKK, then on TYR R-303 to TYR VOR/DME.

SC-2, 11 JUN 2026 to 09 JUL 2026

SC-2, 11 JUN 2026 to 09 JUL 2026