

KUSSO THREE DEPARTURE (RNAV)
(KUSSO3.KUSSO) 14MAY26

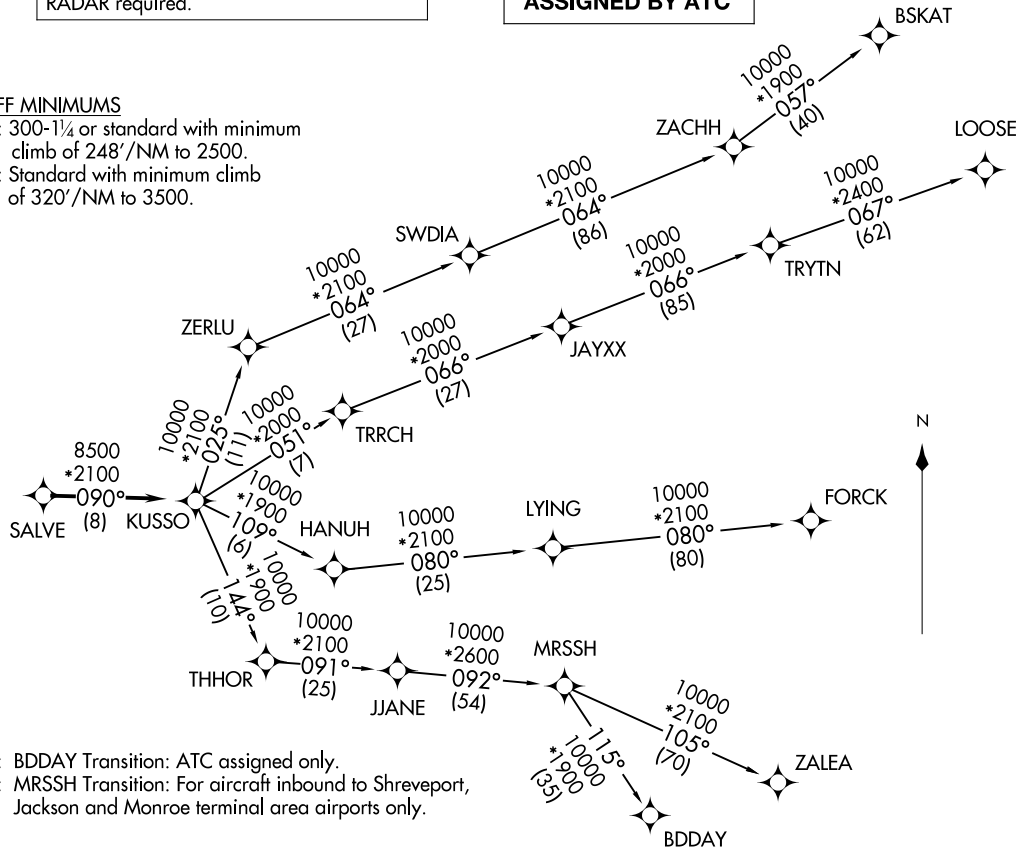
LONE STAR DEP CON
118.1 306.95
CTAF
122.8

RNAV 1 - DME/DME/IRU or GPS required.
RADAR required.

**TOP ALTITUDE:
ASSIGNED BY ATC**

TAKEOFF MINIMUMS

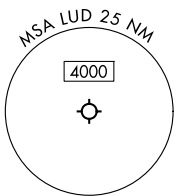
Rwy 17: 300-1¼ or standard with minimum climb of 248'/NM to 2500.
Rwy 35: Standard with minimum climb of 320'/NM to 3500.



NOTE: BDDAY Transition: ATC assigned only.
NOTE: MRSSH Transition: For aircraft inbound to Shreveport, Jackson and Monroe terminal area airports only.

(CONTINUED ON FOLLOWING PAGE)

NOTE: Chart not to scale.



DECATUR, TEXAS
DECATUR MUNI (LTD)

(KUSSO3.KUSSO) 26134
KUSSO THREE DEPARTURE (RNAV)

AL-6190 (FAA)

DECATUR MUNI (LTD)
DECATUR, TEXAS

KUSSO THREE DEPARTURE (RNAV)



DEPARTURE ROUTE DESCRIPTION

TAKEOFF RUNWAY 17: Climb on heading 169° to 1700 before proceeding north.

When entering controlled airspace, fly heading assigned by ATC, expect RADAR vectors to SALVE, then on track 090° to KUSSO, then on assigned transition. Maintain ATC assigned altitude, expect filed altitude 10 minutes after departure.

BDDAY TRANSITION (KUSSO3.BDDAY)

BSKAT TRANSITION (KUSSO3.BSKAT)

FORCK TRANSITION (KUSSO3.FORCK)

LOOSE TRANSITION (KUSSO3.LOOSE)

MRSSH TRANSITION (KUSSO3.MRSSH)

ZALEA TRANSITION (KUSSO3.ZALEA)

SC-2, 11 JUN 2026 to 09 JUL 2026

SC-2, 11 JUN 2026 to 09 JUL 2026