

WAAS CH <b>42942</b> <b>W32A</b>	APP CRS <b>314°</b>	Rwy Ldg TDZE <b>987</b> Apt Elev <b>987</b>	<b>4600</b> <b>987</b> <b>987</b>
--	------------------------	---	---

# RNAV (GPS) RWY 32

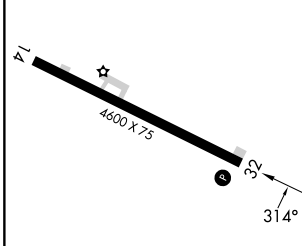
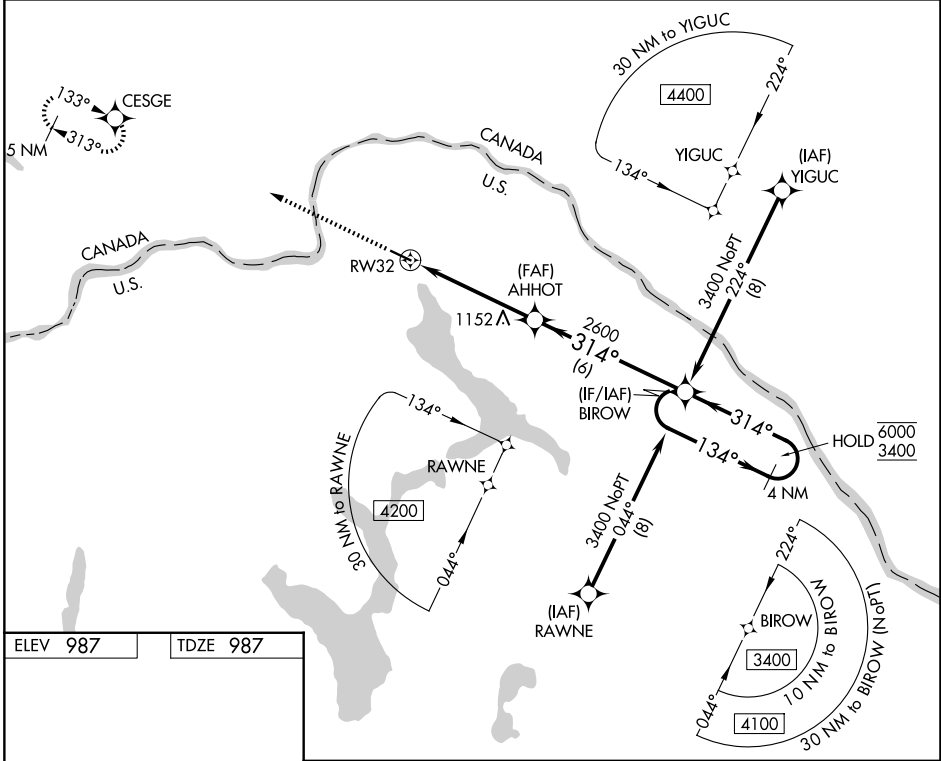
NORTHERN AROOSTOOK RGNL (FVE)

RNP APCH - GPS.

**V** VDP NA when using CAR altimeter setting. When local altimeter setting not received, use CAR altimeter setting and increase LPV to 1303 feet; increase all MDAs 120 feet and LNAV visibility Cat C and D 3/8 SM; increase Circling visibility Cat B and D 1/4 SM and Cat C 1/2 SM.

**MISSED APPROACH:** Climb to 4100 direct CESGE and hold, continue climb-in-hold to 4100.

ASOS <b>135.725</b>	BOSTON CENTER <b>124.75 239.05</b>	UNICOM <b>122.7 (CTAF)</b>
------------------------	---------------------------------------	-------------------------------



4100	↑	CESGE	4 NM Holding Pattern
BIROW	2600	AHHOT	134° → 6000 ← 314° 3400
RW32	1.2 NM	3.7 NM	6 NM
	1.2 NM		
			GP 3.00° TCH 40

CATEGORY	A	B	C	D
LPV DA	1187-1		200 (200-1)	
LNAV MDA	1420-1	433 (500-1)	1420-1¼	433 (500-1¼)
CIRCLING	1560-1 573 (600-1)	1700-1 713 (800-1)	1840-2½ 853 (900-2½)	1840-2¾ 853 (900-2¾)

REIL Rwy 14 and 32 **1**  
MIRL Rwy 14-32 **1**

NE-1, 11 JUN 2026 to 09 JUL 2026

NE-1, 11 JUN 2026 to 09 JUL 2026