

APP CRS	Rwy Idg	4000
232°	TDZE	995
	Apt Elev	995

RNAV (GPS) RWY 23

TRI-STATE STEUBEN COUNTY (A.N.Q)

RNP APCH.

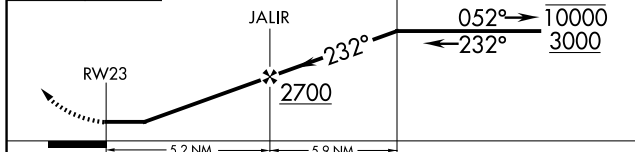
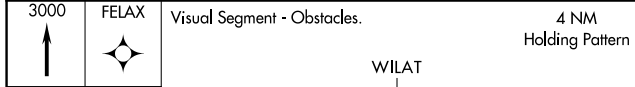
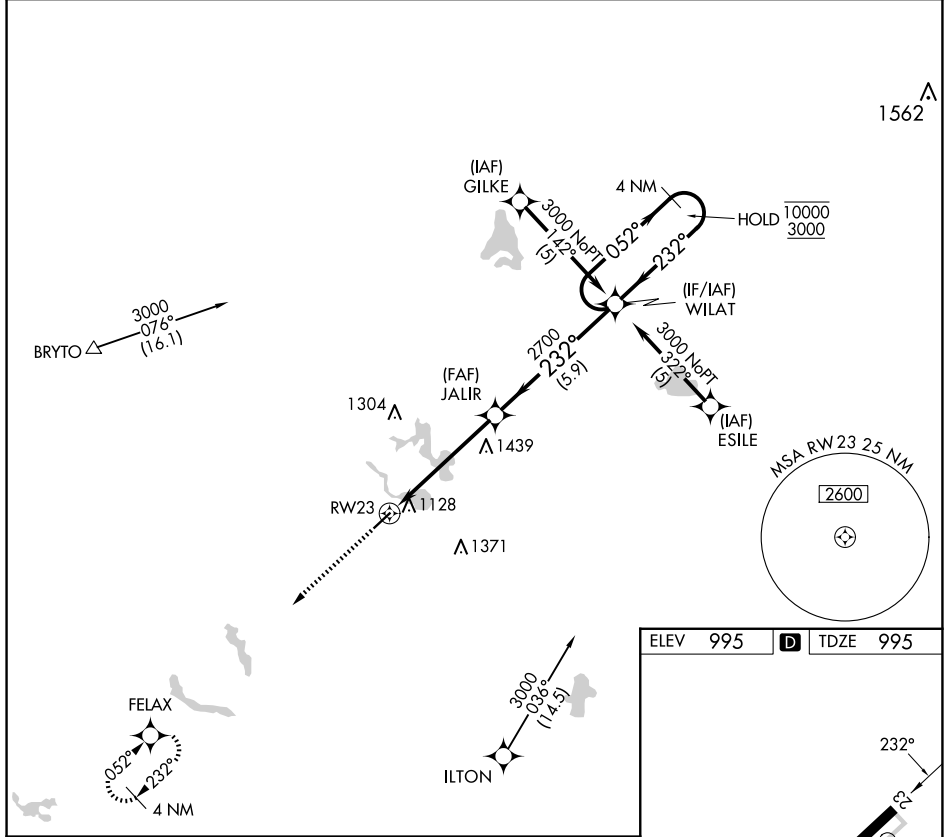
▼ Rwy 23 helicopter visibility reduction below 1 SM NA.
Procedure NA at night.

MISSED APPROACH: Climb to 3000
direct FELAX and hold.

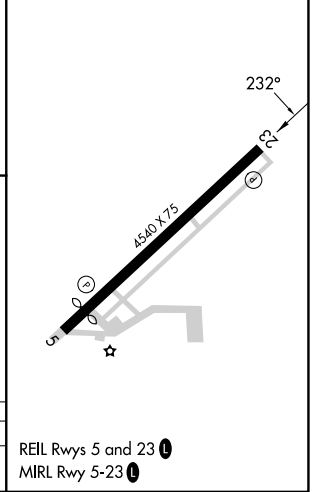
AWOS-3
118.175

FORT WAYNE APP CON
127.2 284.6 (SW/NW)
132.15 284.6 (SE/NE)

UNICOM
123.075 (CTAF) **①**



ELEV	995	D	TDZE	995
------	-----	----------	------	-----



CATEGORY	A	B	C	D
LNAV MDA	1700-1	705 (800-1)	1700-2	NA
			705 (800-2)	

REIL Rwys 5 and 23 **①**
MIRL Rwy 5-23 **①**

EC-2, 11 JUN 2026 to 09 JUL 2026

EC-2, 11 JUN 2026 to 09 JUL 2026