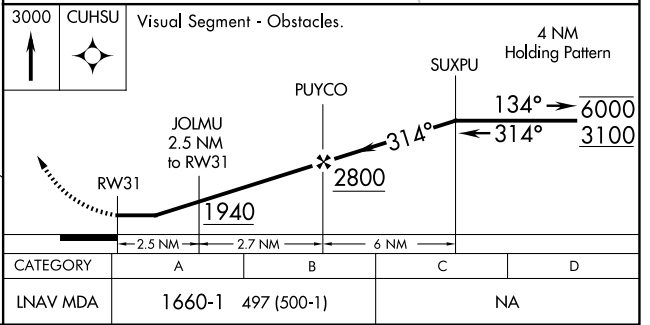
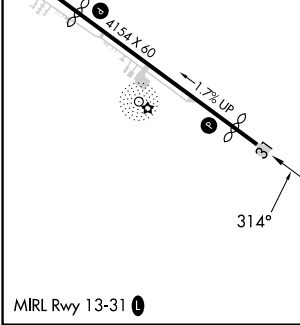
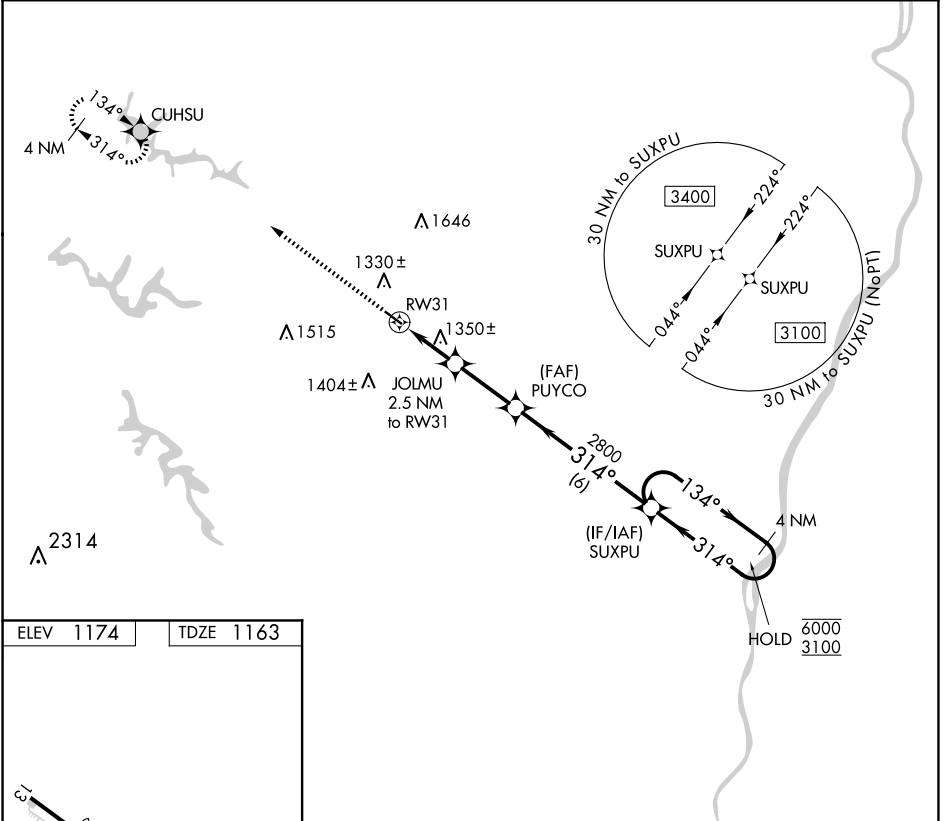


APP CRS	Rwy Idg	<b>3744</b>
<b>314°</b>	TDZE	<b>1163</b>
	Apt Elev	<b>1174</b>

# RNAV (GPS) RWY 31

HARRISON COUNTY (8G6)

RNP APCH.		MISSED APPROACH: Climb to 3000 direct CUHSU and hold.
▼ Rwy 31 helicopter visibility reduction below 1 SM NA. Use Wheeling altimeter setting; when not received, use Washington altimeter setting and increase all MDA 40 feet. Procedure NA at night. ▲ NA		
HLG ASOS <b>127.375</b>	CLEVELAND CENTER <b>126.95 239.30</b>	UNICOM <b>122.8 (CTAF) 0</b>



EC-2, 11 JUN 2026 to 09 JUL 2026

EC-2, 11 JUN 2026 to 09 JUL 2026