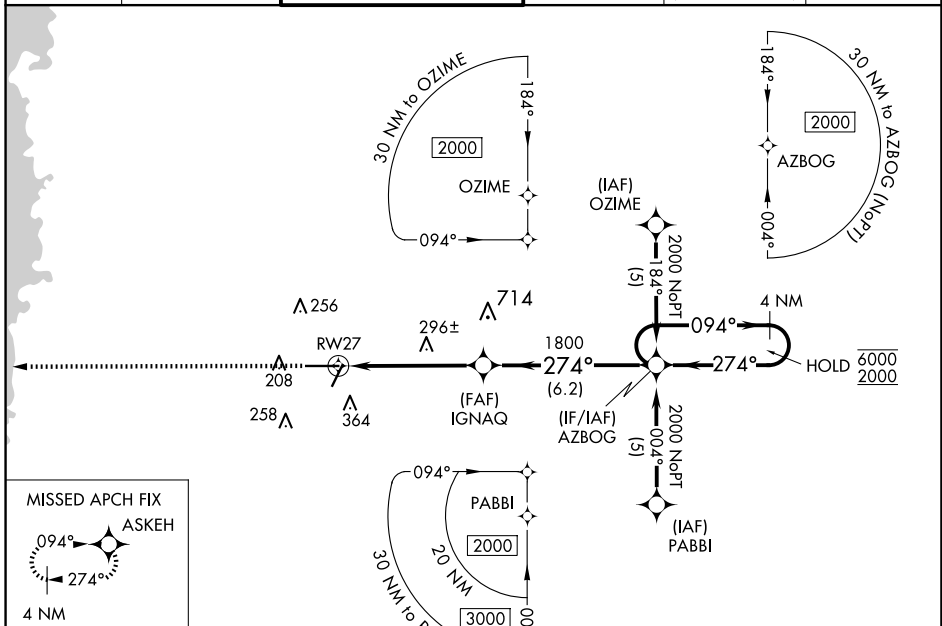


WAAS CH <b>86408</b> <b>W27A</b>	APP CRS <b>274°</b>	Rwy ldg TDZE <b>69</b> Apt Elev <b>76</b>	<b>7001</b>
--	------------------------	---	-------------

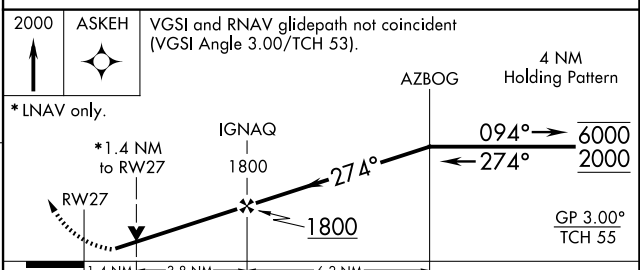
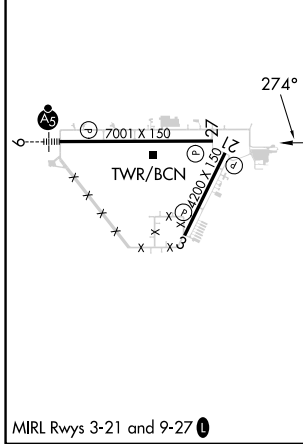
# RNAV (GPS) RWY 27

BROOKSVILLE-TAMPA BAY RGNL (BKV)

RNP APCH.		MISSED APPROACH: Climb to 2000 direct ASKEH and hold.	
<p><b>▼</b> Rwy 27 helicopter visibility reduction below 3/4 SM NA. For uncompensated Baro-VNAV systems, LNAV/VNAV NA below -15°C or above 48°C.</p>			
ASOS <b>134.725</b>	TAMPA APP CON <b>125.3 316.05</b>	BROOKSVILLE TOWER ★ <b>118.55</b> (CTAF) <b>0</b>	GND CON <b>121.4</b>
		CLNC DEL <b>119.125</b> (When twr closed)	UNICOM <b>123.0</b>



ELEV <b>76</b>	TDZE <b>69</b>
----------------	----------------



2000	ASKEH	VGSi and RNAV glidepath not coincident (VGSi Angle 3.00/TCH 53).		
* LNAV only.		4 NM Holding Pattern		
RWY 27		IGNAQ	AZBOG	
1.4 NM		3.8 NM	6.2 NM	
274°	094°	6000	2000	
		GP 3.00° TCH 55		
CATEGORY	A	B	C	D
LPV DA	442-1¼ 373 (400-1¼)			
LNAV/VNAV DA	595-1¾ 526 (600-1¾)			
LNAV MDA	620-1	551 (600-1)	620-1⅝ 551 (600-1⅝)	620-1¾ 551 (600-1¾)