

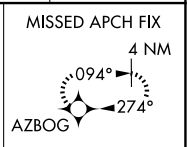
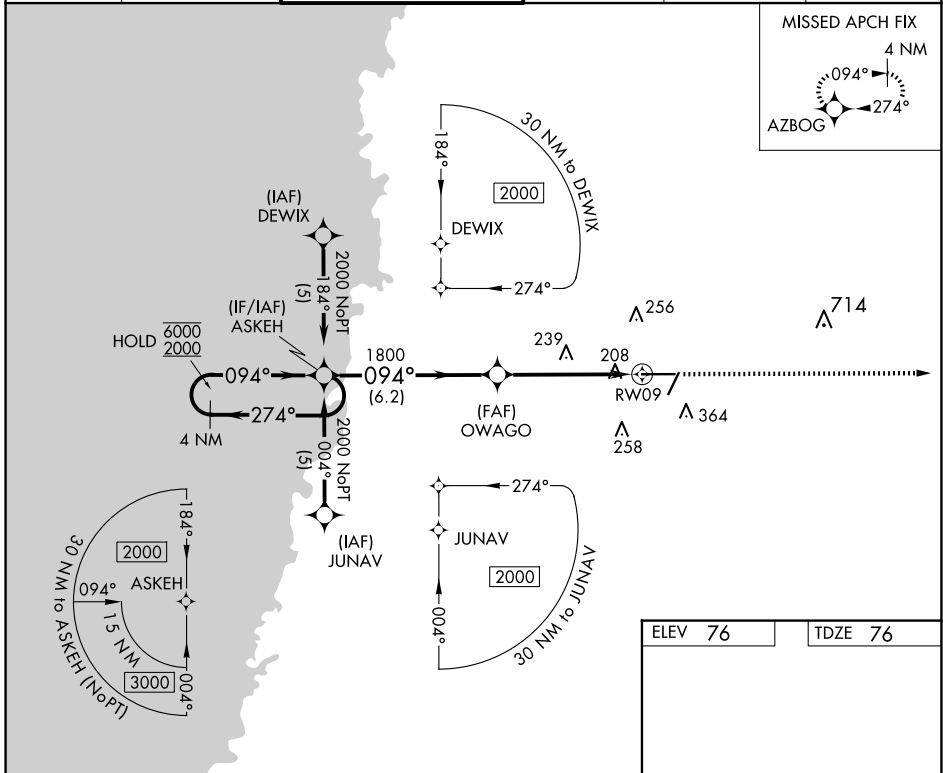
APP CRS	Rwy Idg	<b>7001</b>
<b>094°</b>	TDZE	<b>76</b>
	Apt Elev	<b>76</b>

# RNAV (GPS) RWY 9

BROOKSVILLE-TAMPA BAY RGNL (BKV)

RNP APCH.	MALSR	MISSED APPROACH: Climb to 2000 direct AZBOG and hold.
<p><b>▼</b> For uncompensated Baro-VNAV systems, LNAV/VNAV NA below -15°C or above 48°C.</p> <p><b>▲</b> For inop ALS increase LNAV Cat D visibility to 1/4 SM.</p>		

ASOS <b>134.725</b>	TAMPA APP CON <b>125.3 316.05</b>	BROOKSVILLE TOWER ★ <b>118.55 (CTAF) 0</b>	GND CON <b>121.4</b>	CLNC DEL <b>119.125</b> (When twr closed)	UNICOM <b>123.0</b>
------------------------	--------------------------------------	---	-------------------------	---	------------------------



<p>4 NM Holding Pattern</p> <p>ASKEH</p> <p>6000 ← 274°</p> <p>2000 → 094°</p> <p>GP 3.00° TCH 57</p>	<p>VGSI and RNAV glidepath not coincident (VGSI Angle 3.00/TCH 58).</p>				<p>2000</p> <p>↑</p>	<p>AZBOG</p> <p>✦</p>
	<p>OWAGO</p> <p>1800</p> <p>*1.2 NM to RW09</p> <p>RW09</p> <p>*LNAV only.</p>					
CATEGORY	A	B	C	D		
LNAV/VNAV DA	507-1 431 (500-1)					
LNAV MDA	500-3/4 424 (500-3/4)			500-1 424 (500-1)		

ELEV 76	TDZE 76
---------	---------

MIRL Rwy 3-21 and 9-27

SE-3, 11 JUN 2026 to 09 JUL 2026

SE-3, 11 JUN 2026 to 09 JUL 2026