

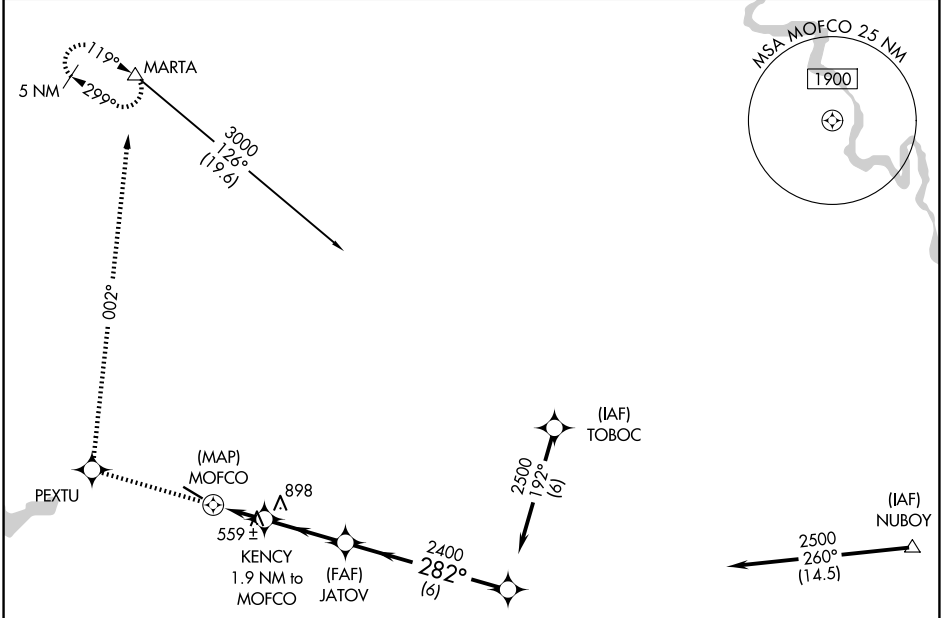
APP CRS 282°	Rwy Ldg 4402
	TDZE 311
	Apt Elev 319

RNAV (GPS) RWY 30

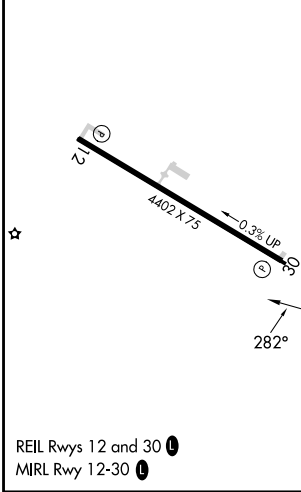
HART (3R4)

RNP APCH.	MISSED APPROACH: Climb to 4500 direct PEXTU and right turn via track 002° to MARTA and hold, continue climb in hold to 4500.
<p>▼ Rwy 30 helicopter visibility reduction below ¼ SM NA.</p> <p>▲ NA Use Fort Polk altimeter setting; when not received, use Natchitoches altimeter setting and increase all MDA 20 feet.</p>	

MAKS APP CON 123.7 261.3	GCO 135.075	UNICOM 122.8 (CTAF)
------------------------------------	-----------------------	-------------------------------



ELEV 319	TDZE 311
-----------------	-----------------



4500 PEXTU		MARTA		VGSi and descent angles not coincident (VGSi Angle 3.50/TCH 56).
KENCY 1.9 NM to MOFCO		JATOV		
MOFCO		OXIDE		Procedure Turn NA
1260		2400		2500
0.5		3 NM		6 NM
CATEGORY	A	B	C	D
LNAV MDA	900-1 589 (600-1)		900-1¾ 589 (600-1¾)	NA

SC-4, 11 JUN 2026 to 09 JUL 2026

SC-4, 11 JUN 2026 to 09 JUL 2026