

| | | | |
|--|------------------------|-----------------------------|---|
| WAAS CH 78432 W01B | APP CRS 006° | Rwy Ldg TDZE Apt Elev | 5002 522 522 |
|--|------------------------|-----------------------------|---|

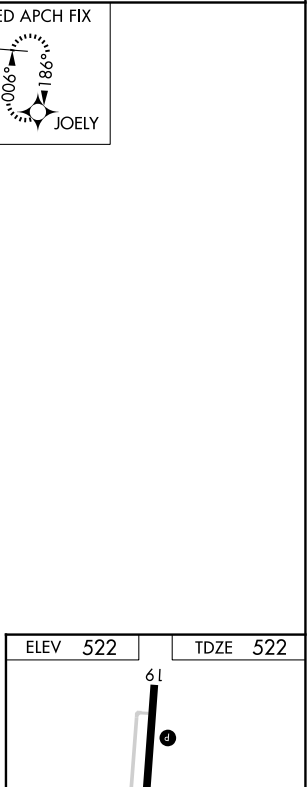
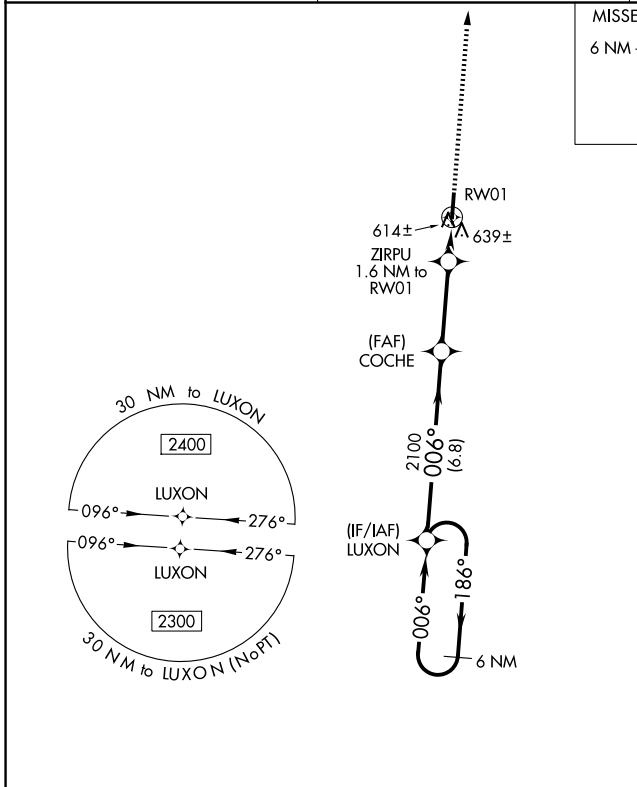
RNAV (GPS) Y RWY 1

MAYFIELD GRAVES COUNTY (M25)

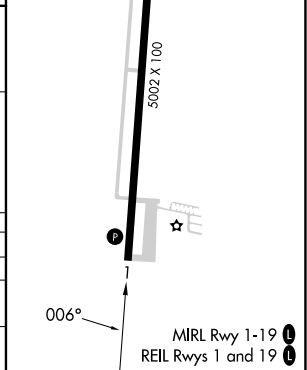
⚠ NA DME/DME RNP-0.3 NA. When local altimeter setting not received, use Paducah altimeter setting and increase all MDA 80 feet and increase LP Cat C and D visibility 3/8 mile and LNAV Cat C and D visibility and Circling Cat C and D visibility 1/4 mile. Rwy 1, 19 helicopter visibility reduction below 1 SM NA. Procedure NA at night.

MISSED APPROACH: Climb to 2400 direct JOELY and hold.

| | | |
|--------------------------|--|---------------------------------|
| AWOS-3 120.625 | MEMPHIS CENTER 133.65 292.15 | UNICOM 122.8 (CTAF) ① |
|--------------------------|--|---------------------------------|



| | | | | |
|----------------------|--------|-------------|-----------------|-----------------|
| 6 NM Holding Pattern | LUXON | 2400 | JOELY | |
| 2300 ← 186° | 006° → | 006° | 3.00° TCH 40 | |
| | 2100 | 1060 | 1.6 NM to RW01 | |
| | 6.8 NM | 3.2 NM | 1.6 NM | |
| CATEGORY | A | B | C | D |
| LP MDA | | 880-1 | 358 (400-1) | |
| LNAV MDA | 900-1 | 378 (400-1) | 900-1 1/8 | 378 (400-1 1/8) |
| CIRCLING | 1060-1 | 538 (600-1) | 1060-1 1/2 | 1280-2 1/2 |
| | | | 538 (600-1 1/2) | 758 (800-2 1/2) |



SE-1, 11 JUN 2026 to 09 JUL 2026

SE-1, 11 JUN 2026 to 09 JUL 2026