

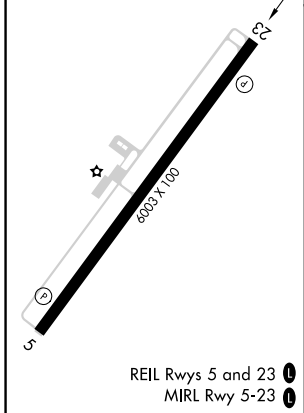
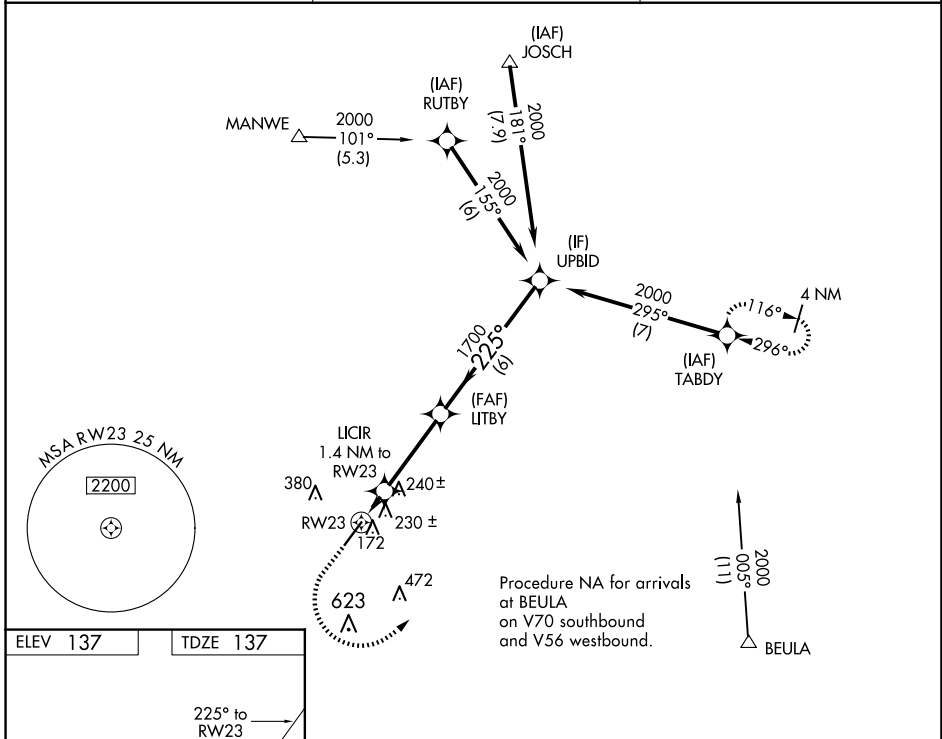
WAAS CH 69521 W23A	APP CRS 225°	Rwy Idg TDZE Apt Elev	6003 137 137
--	------------------------	-----------------------------	---

RNAV (GPS) RWY 23

DUPLIN COUNTY (DPL)

RNP APCH. ▼ ▲ For uncompensated Baro-VNAV systems, LNAV/VNAV NA below -15°C or above 54°C.	MISSED APPROACH: Climb to 1000 then climbing left turn to 2000 direct TABDY and hold.
--	---

AWOS-3 120.675	SEYMOUR JOHNSON APP CON★ 119.7 273.6	UNICOM 123.0 (CTAF) ①
--------------------------	--	---------------------------------



1000	2000	TABDY				
*LNAV only.		LITBY	UPBID		GP 3.00° TCH 43	
RW23		LICIR 1.4 NM to RW23	225°		2000	
*620		1700	1700			
-1.4 NM		3.4 NM	6 NM			
CATEGORY	A	B	C	D		
LPV DA	DA	337-¾		200 (200-¾)		
LNAV/VNAV	DA	407-⅞		270 (300-⅞)		
LNAV MDA	480-1		343 (400-1)			

SE-2, 11 JUN 2026 to 09 JUL 2026

SE-2, 11 JUN 2026 to 09 JUL 2026