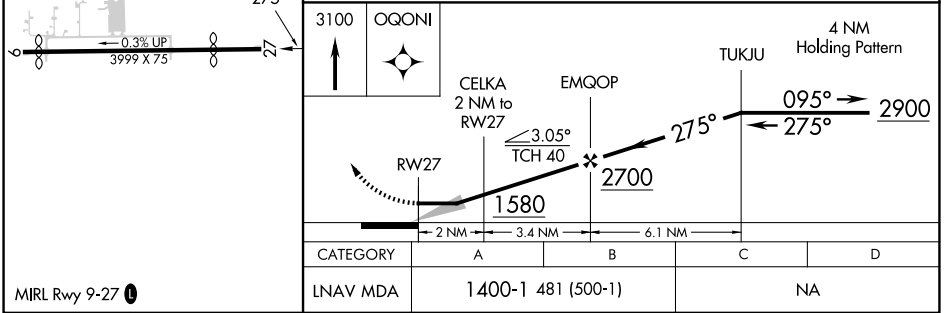
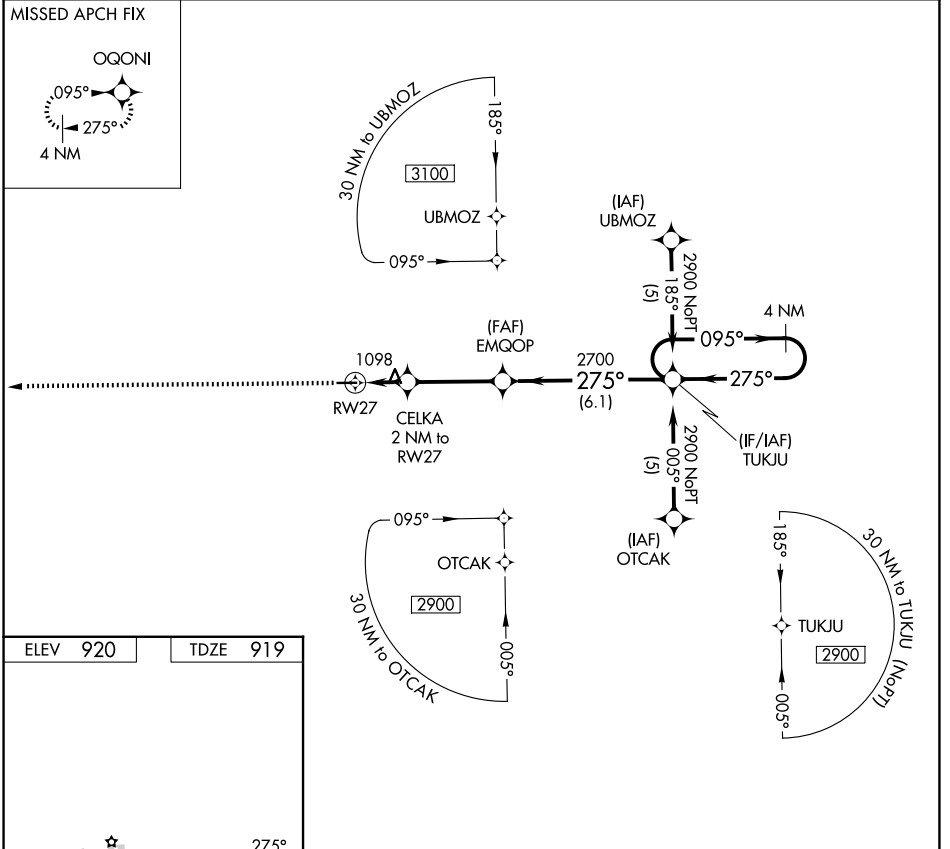


APP CRS	Rwy Ldg	3199
275°	TDZE	919
	Apt Elev	920

RNAV (GPS) RWY 27

PRICES (9G2)

RNP APCH.		MISSED APPROACH: Climb to 3100 direct OQONI and hold.
<p>▼ Use Flint altimeter setting; when not received, use Howell altimeter setting.</p> <p>▲ NA Procedure NA at night. Rwy 27 helicopter visibility reduction below 1 SM NA.</p>		
FNT ASOS	GREAT LAKES APP CON ★	UNICOM
133.15	128.55 257.9	123.0 (CTAF) 0



MIRL Rwy 9-27 0	<table border="1"> <tr> <td>CATEGORY</td> <td>A</td> <td>B</td> <td>C</td> <td>D</td> </tr> <tr> <td>LNAV MDA</td> <td colspan="3">1400-1 481 (500-1)</td> <td>NA</td> </tr> </table>	CATEGORY	A	B	C	D	LNAV MDA	1400-1 481 (500-1)			NA
CATEGORY	A	B	C	D							
LNAV MDA	1400-1 481 (500-1)			NA							

EC-1, 11 JUN 2026 to 09 JUL 2026

EC-1, 11 JUN 2026 to 09 JUL 2026