

WAAS CH 99317 W34A	APP CRS 340°	Rwy Ldg TDZE Apt Elev	5000 1257 1266
--	------------------------	-----------------------------	---

RNAV (GPS) RWY 34

GWINNER/ROGER MELROE FLD (GWR)

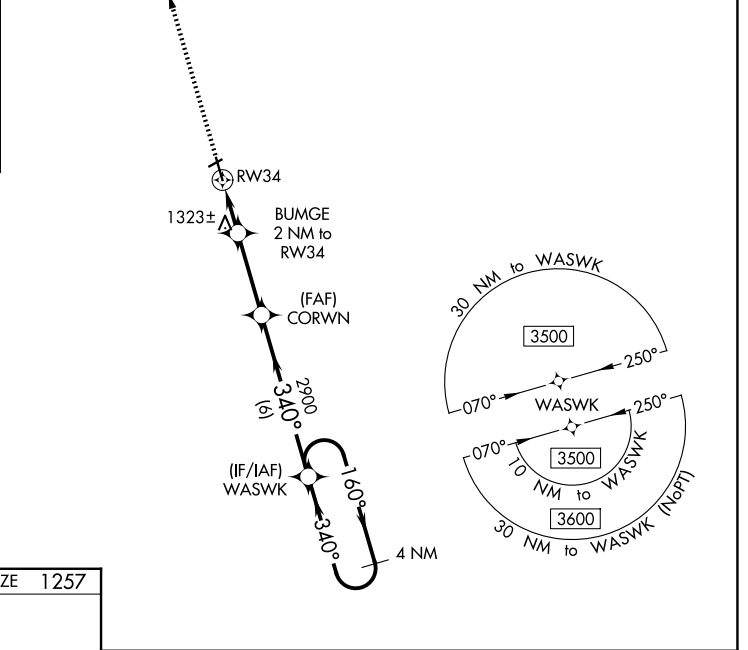
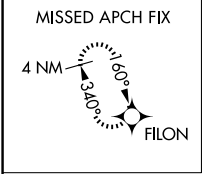
⚠ Circling NA to Rws 6 and 24. For uncompensated Baro-VNAV systems, LNAV/VNAV NA below -17°C (2°F) or above 54°C (130°F). DME/DME RNP-0.3 NA. When local altimeter setting not received use Fargo altimeter setting; increase all DA to 1683 feet and all visibilities ½ SM; increase all MDAs 180 feet and visibility LNAV Cat C/D ½ SM, and Circling Cat C ¾ SM, and Circling Cat D ½ SM. Baro-VNAV and VDP NA when using Fargo altimeter setting.

MISSED APPROACH:
Climb to 3500 direct
FILON and hold.

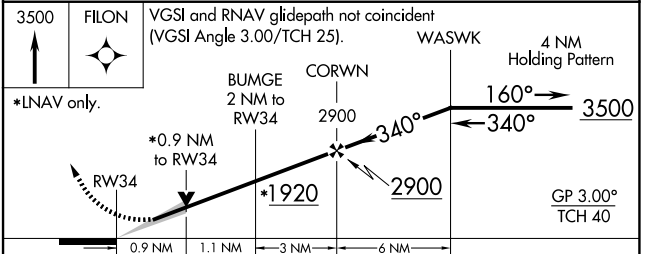
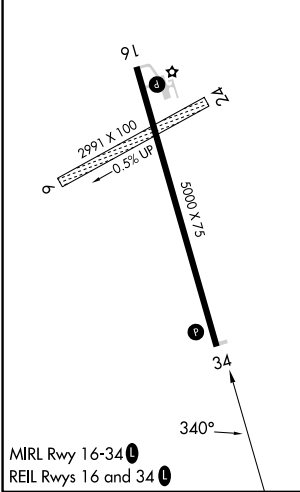
AWOS-3
118.325

MINNEAPOLIS CENTER
127.35 278.3

UNICOM
122.7(CTAF) 0



ELEV 1266	TDZE 1257
-----------	-----------



CATEGORY	A	B	C	D
LPV DA		1507-1	250 (300-1)	
LNAV/VNAV DA		1507-1	250 (300-1)	
LNAV MDA		1580-1	323 (400-1)	
CIRCLING	1780-1	514 (600-1)	1840-1½ 574 (600-1½)	2060-2½ 794 (800-2½)

NC-1, 11 JUN 2026 to 09 JUL 2026

NC-1, 11 JUN 2026 to 09 JUL 2026