

WAAS CH <b>77639</b> <b>W31A</b>	APP CRS <b>320°</b>	Rwy Ldg TDZE Apt Elev	<b>6631</b> <b>5289</b> <b>5320</b>
--	------------------------	-----------------------------	---

# RNAV (GPS) Z RWY 31

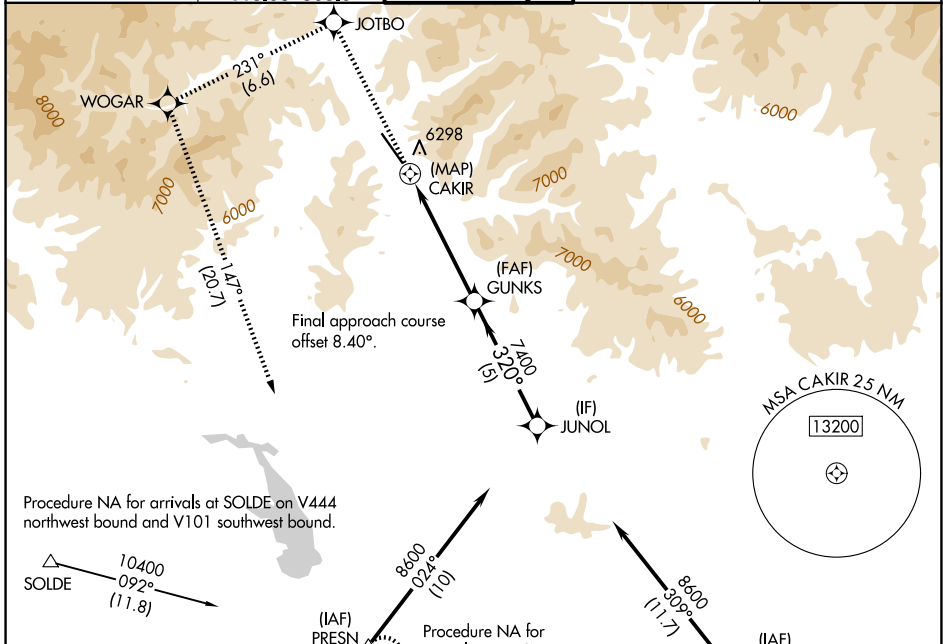
FRIEDMAN MEML (SUN)

RNP APCH - GPS.

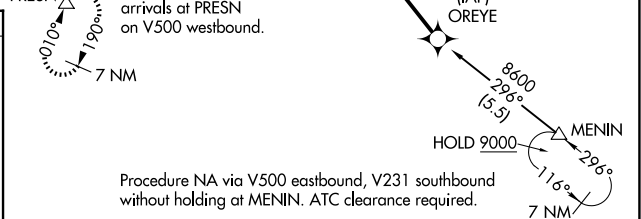
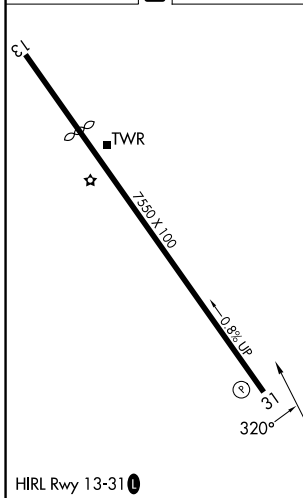
MISSED APPROACH: (Do not exceed 185K until WOGAR) Climb to 10500 direct JOTBO and on track 231° to WOGAR and on track 147° to PRESN and hold. \*Missed approach requires minimum climb of 420 feet per NM to 9500; if unable to meet climb gradient, see RNAV (GPS) Y RWY 31.

When local altimeter setting not received, procedure NA.  
-13°C

ATIS <b>128.225</b>	SALT LAKE CENTER <b>118,05 363.0</b>	HAILEY TOWER * <b>125.6</b> (CTAF) <b>0</b>	GND CON <b>121.7</b>	UNICOM <b>122.95</b>
------------------------	---	--	-------------------------	-------------------------



ELEV 5320	<b>D</b>	TDZE 5289
-----------	----------	-----------



10500	JOTBO	tr 231°	WOGAR	tr 147°	PRESN	GUNKS	JUNOL
CATEGORY		A		B		C	
LP	MDA*	6180-1¼	891 (900-1¼)	6180-2½	891 (900-2½)		
LN	MDA*	6920-1¼	1631 (1600-1¼)	6920-1½	1631 (1600-1½)		
						6920-3	1631 (1600-3)

NW-1, 11 JUN 2026 to 09 JUL 2026

NW-1, 11 JUN 2026 to 09 JUL 2026