

WAAS CH 77834 W02A	APP CRS 023°	Rwy Ldg TDZE Apt Elev	5000 805 812
--	------------------------	-----------------------------	---

RNAV (GPS) RWY 2

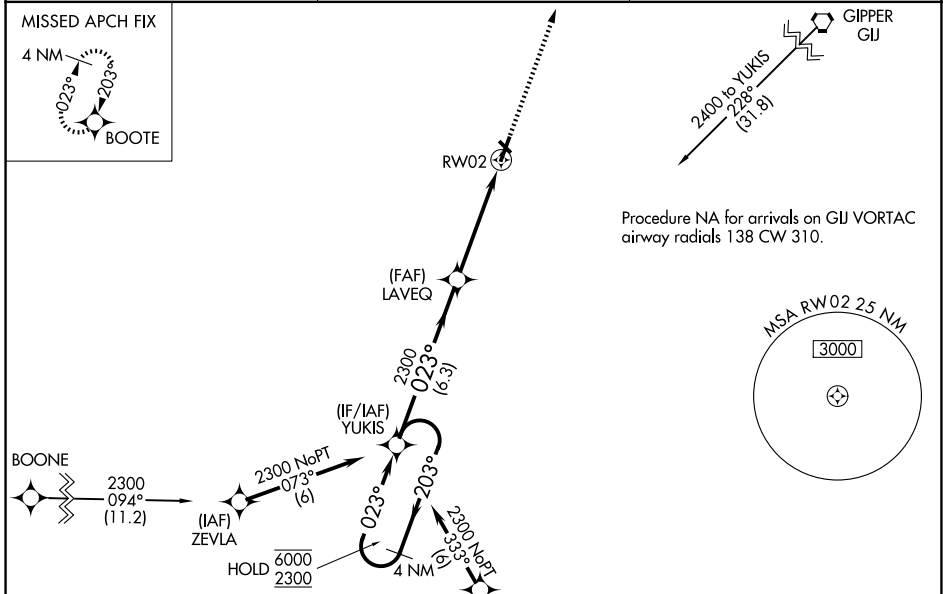
LA PORTE MUNI (PPO)

RNP APCH - GPS.

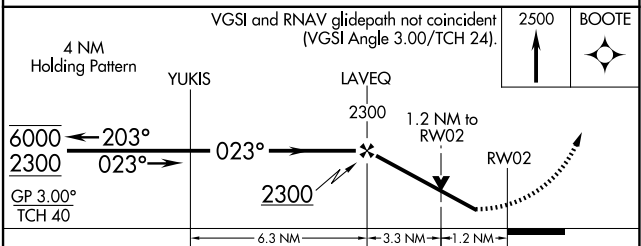
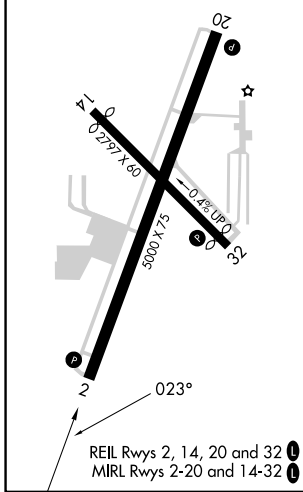
⚠ Circling Rwy 14, 32 NA at night. For uncompensated Baro-VNAV systems, LNAV/VNAV NA below -16°C or above 54°C. Rwy 2 helicopter visibility reduction below 3/4 SM NA. Baro-VNAV and VDP NA when using SBN altimeter setting. When local altimeter setting not received, use SBN altimeter setting: increase LPV DA to 1151 feet and all visibilities 1/8 SM; increase LNAV/VNAV DA to 1274 feet and all visibilities 1/4 SM; increase all MDAs 60 feet and LNAV visibility Cat C and D 1/4 SM.

MISSED APPROACH: Climb to 2500 direct BOOTE and hold.

AWOS-3PT 119.825	SOUTH BEND APP CON ★ 132.05 257.8	UNICOM 123.0 (CTAF) 0
----------------------------	---	---------------------------------



ELEV 812	TDZE 805
----------	----------



CATEGORY	A	B	C	D
LPV DA		1098-7/8	293 (300-7/8)	
LNAV/VNAV DA		1221-1 1/8	416 (500-1 1/8)	
LNAV MDA	1220-1	415 (500-1)	1220-1 1/8	415 (500-1 1/8)
CIRCLING	1320-1	508 (600-1)	1560-2 1/4 748 (800-2 1/4)	1560-2 1/2 748 (800-2 1/2)

EC-2, 11 JUN 2026 to 09 JUL 2026

EC-2, 11 JUN 2026 to 09 JUL 2026