

WAAS CH <b>87034</b> <b>W20A</b>	APP CRS <b>203°</b>	Rwy Ldg TDZE Apt Elev	<b>5000</b> <b>812</b> <b>812</b>
--	------------------------	-----------------------------	---

# RNAV (GPS) RWY 20

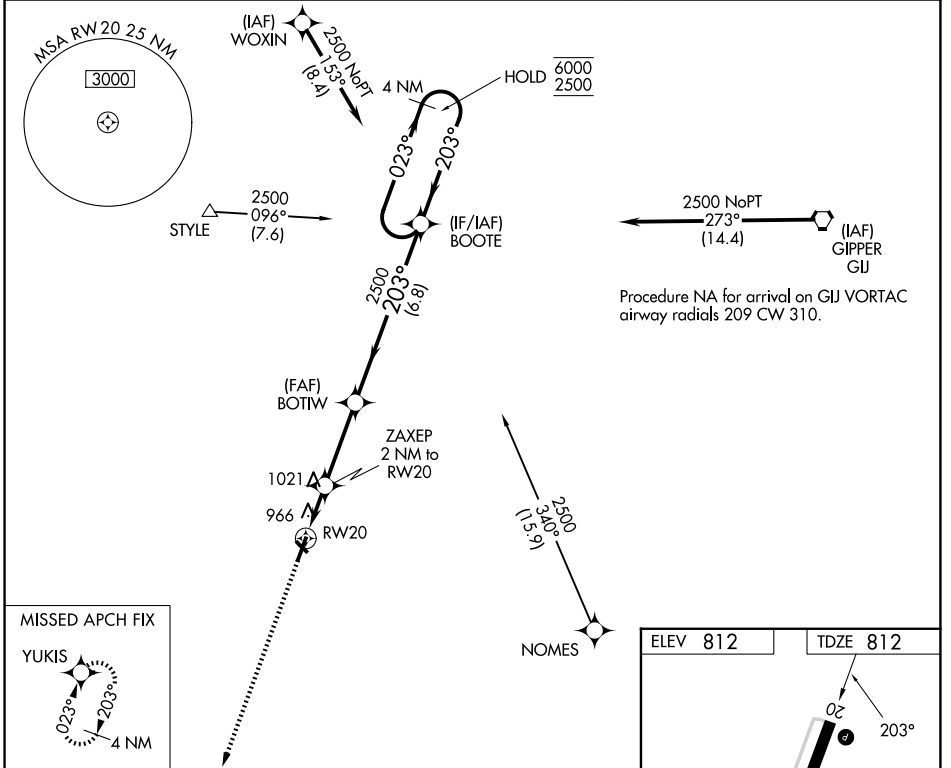
LA PORTE MUNI (PPO)

RNP APCH - GPS.

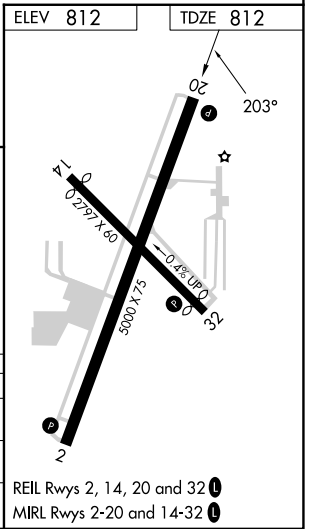
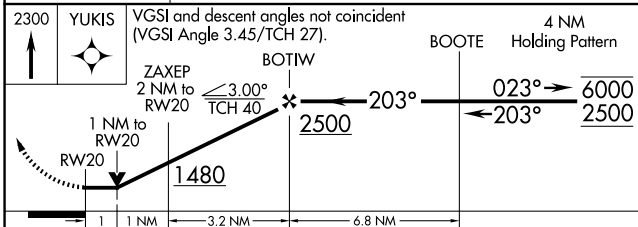
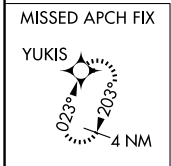
⚠ Circling Rwy 14, 32 NA at night. Rwy 20 helicopter visibility reduction below ¾ SM NA. VDP NA when using SBN altimeter setting. When local altimeter setting not received, use SBN altimeter setting: increase all MDA's 60 feet; LNAV visibility Cat C and D ½ SM and LP visibility Cat C and D ¼ SM.

MISSED APPROACH: Climb to 2300 direct YUKIS and hold.

AWOS-3PT <b>119.825</b>	SOUTH BEND APP CON ★ <b>132.05 257.8</b>	UNICOM <b>123.0 (CTAF) 0</b>
----------------------------	---	---------------------------------



Procedure NA for arrival on GIJ VORTAC airway radials 209 CW 310.



CATEGORY	A	B	C	D
LP MDA	1220-1	408 (500-1)	1220-1½	408 (500-1½)
LNAV MDA	1280-1	468 (500-1)	1280-1¾	468 (500-1¾)
CIRCLING	1320-1	508 (600-1)	1560-2¼ 748 (800-2¼)	1560-2½ 748 (800-2½)

REIL Rwy's 2, 14, 20 and 32 0  
MIRL Rwy's 2-20 and 14-32 0

EC-2, 11 JUN 2026 to 09 JUL 2026

EC-2, 11 JUN 2026 to 09 JUL 2026