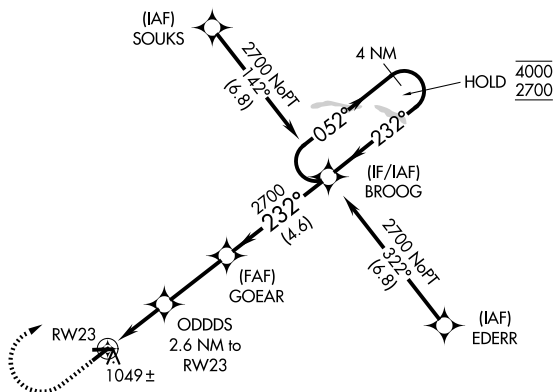
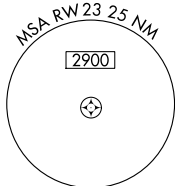


APP CRS	Rwy Ldg	3760
232°	TDZE	932
	Apt Elev	936

RNAV (GPS) RWY 23

SHERIDAN (5I4)

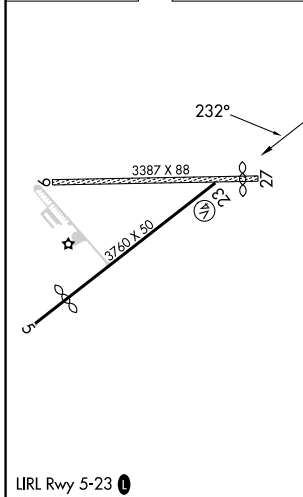
RNP APCH - GPS.		MISSED APPROACH: Climb to 1800 then climbing right turn to 2700 direct BROOG and hold.
▲ NA	Circling NA to Rwy 9 and 27. Procedure NA at night. Rwy 23 helicopter visibility reduction below 1 SM NA. Use Indianapolis Exec altimeter setting.	
TYQ AWOS-3PT 120.725	INDIANAPOLIS APP CON 124.65 317.8	UNICOM 123.075 (CTAF) ①



EC-2, 11 JUN 2026 to 09 JUL 2026

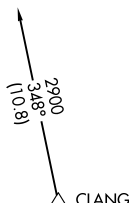
EC-2, 11 JUN 2026 to 09 JUL 2026

ELEV 936	TDZE 932
----------	----------



LIRL Rwy 5-23 ①
SHERIDAN, INDIANA
Amdt 1 19MAY22

Procedure NA for arrivals at CLANG on V14-192-210 southwest bound.



1800	2700	BROOG	4 NM Holding Pattern	
↑	↷	✧		
ODDDS 2.6 NM to RWY 23		GOEAR	BROOG	
RWY 23	3.00° TCH 50	2700	4000	
↷	↷	↷	↷	
1800	2700	2700	2700	
↷	↷	↷	↷	
2.6 NM	2.8 NM	4.6 NM		
CATEGORY	A	B	C	D
LNAV MDA	1340-1	408 (500-1)	1340-1½ 408 (500-1½)	NA
CIRCLING	1400-1 464 (500-1)	1420-1 484 (500-1)	1500-1½ 564 (600-1½)	NA

RNAV (GPS) RWY 23