

APP CRS	Rwy Ldg	3397
250°	TDZE	70
	Apt Elev	70

RNAV (GPS) RWY 25

WISCASSET (IWI)

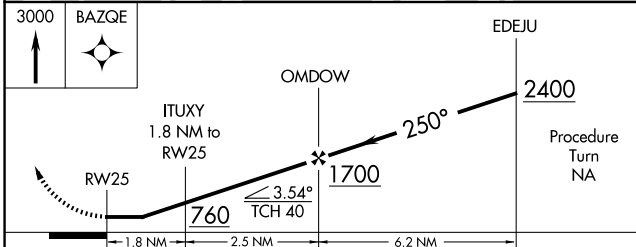
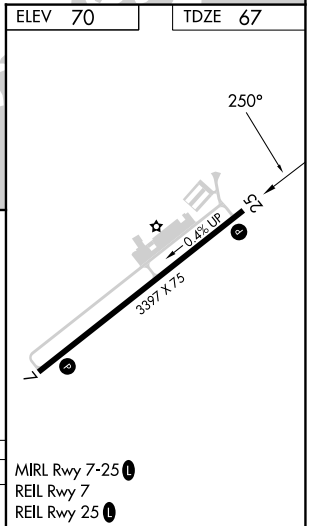
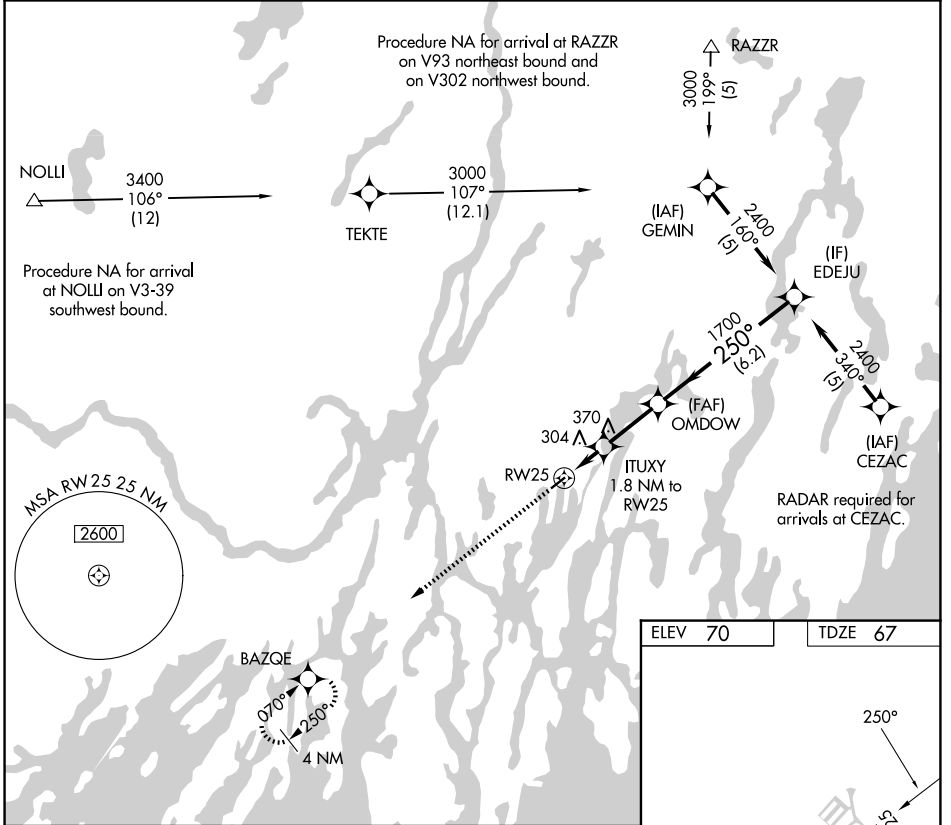
RNP APCH.

⚠ Procedure NA at night. Rwy 25 helicopter visibility reduction below 1 SM NA. When local altimeter setting not received use Rockland altimeter setting and increase all MDA 80 feet.

MISSED APPROACH: Climb to 3000 direct BAZQE and hold.

ASOS	PORTLAND APP CON★
135.725	119.75 269.35 (112°-292°)
	120.4 299.2 (293°-111°)

UNICOM
122.8 (CTAF) 📻



CATEGORY	A	B	C	D
LNVA MDA	580-1	513 (600-1)	NA	

NE-1, 11 JUN 2026 to 09 JUL 2026

NE-1, 11 JUN 2026 to 09 JUL 2026