

WAAS CH <b>70603</b> W33A	APP CRS <b>328°</b>	Rwy Ldg TDZE <b>367</b> Apt Elev <b>367</b>
---------------------------------	------------------------	---

# RNAV (GPS) RWY 33

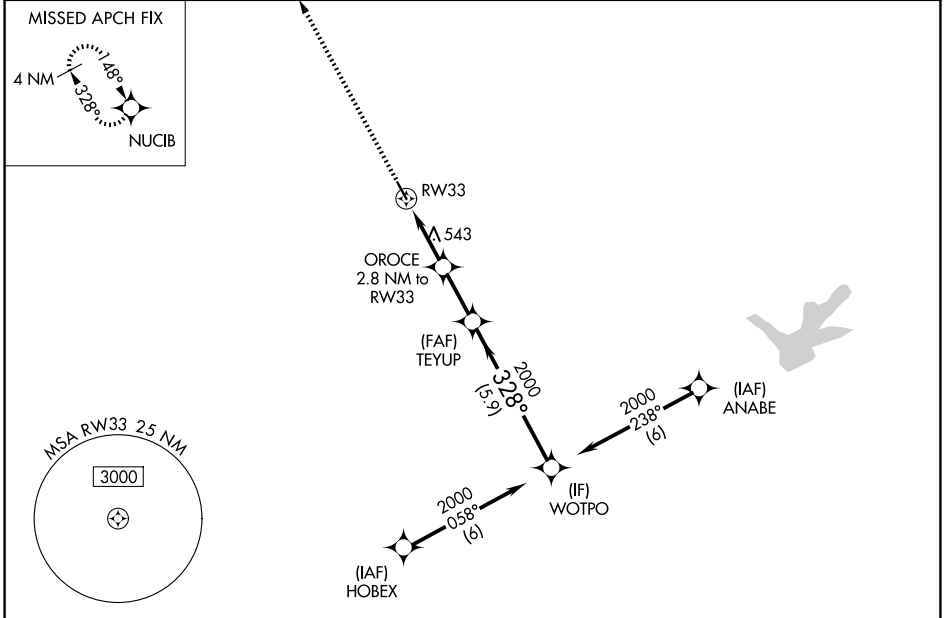
COULTER FLD (CFD)

RNP APCH - GPS.

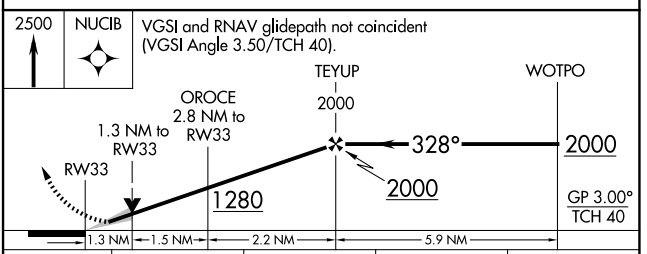
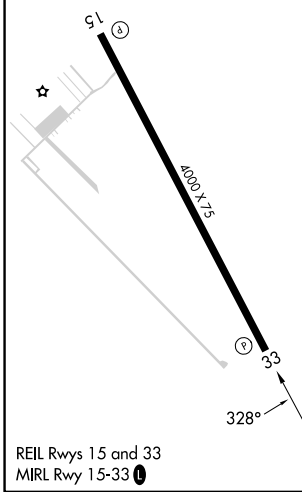
Baro-VNAV and VDP NA when using CLL altimeter setting. When local altimeter setting not received, use CLL altimeter setting and increase LPV and LNAV/VNAV DA to 667 feet; increase all MDAs 40 feet.

MISSED APPROACH: Climb to 2500 direct NUCIB and hold.

AWOS-3PT <b>125.975</b>	HOUSTON APP CON <b>134.3 360.85</b>	UNICOM <b>123.0 (CTAF)</b>
----------------------------	--	-------------------------------



ELEV <b>367</b>	TDZE <b>367</b>
-----------------	-----------------



CATEGORY	A	B	C	D
LPV DA	642-1	275 (300-1)		NA
LNAV/VNAV DA	642-1	275 (300-1)		NA
LNAV MDA	880-1	513 (600-1)		NA

SC-5, 11 JUN 2026 to 09 JUL 2026

SC-5, 11 JUN 2026 to 09 JUL 2026